

ARDEX TORCH-APPLIED MEMBRANES DRAWING LIST

DRAWING NO.	SHEET TITLE	DATE
AT-00	DRAWING LIST	05/04/2019
AT-01	THRESHOLD AT OPENING - REBATED	05/04/2019
AT-02	THRESHOLD AT OPENING	05/04/2019
AT-03	BOTTOM PLATE WALL - DIRECT FIXED	05/04/2019
AT-04	BOTTOM PLATE WALL - CAVITY	05/04/2019
AT-05	INTERNAL CENTRAL	05/04/2019
AT-06	INTERNAL GUTTER	05/04/2019
AT-07	BOX GUTTER & PARAPET DOWNTURN	05/04/2019
AT-08	OVERFLOW	05/04/2019
AT-09	SCUPPER OUTLET	05/04/2019
AT-10	EAVES & VERGE	05/04/2019
AT-11	SPOUTING	05/04/2019
AT-12	ROOF PENETRATION	05/04/2019
AT-13	FLASHING INTO CONCRETE WALLS - CHASE	05/04/2019
AT-14	FLASHING INTO CONCRETE WALLS - MECHANICAL	05/04/2019
AT-15	FLASHING INTO CONCRETE WALLS - FLASHING	05/04/2019
AT-16	ONE WAY SUBSTRATE VENTILATOR	05/04/2019
AT-17	PIPE PENETRATION	05/04/2019
AT-18	PLANT EQUIPMENT SUPPORTS	05/04/2019
AT-19	TAPING SUBSTRATE	05/04/2019
AT-20	SEISMIC JOINT	05/04/2019
AT-21	CONSTRUCTION JOINT	05/04/2019
AT-22	TYPICAL MEMBRANE LAP & LAYERS	05/04/2019
AT-23	3D - INTERNAL ROOF DRAIN	05/04/2019
AT-24	3D - RAINWATER HEAD & SCUPPER OPENING IN MEMBRANE	05/04/2019
AT-25	3D - ROOF EDGE MECHANICAL FIXED	05/04/2019
AT-26	WARM ROOF SYSTEM - CONCRETE	05/04/2019
AT-27	WARM ROOF SYSTEM - METAL DECK	05/04/2019
AT-28	WARM ROOF SYSTEM - PLYWOOD	05/04/2019

ARDEX TORCH-APPLIED MEMBRANES

DRAWING LIST

SHEET TITLE

DWG NO.

AT-00

DATE

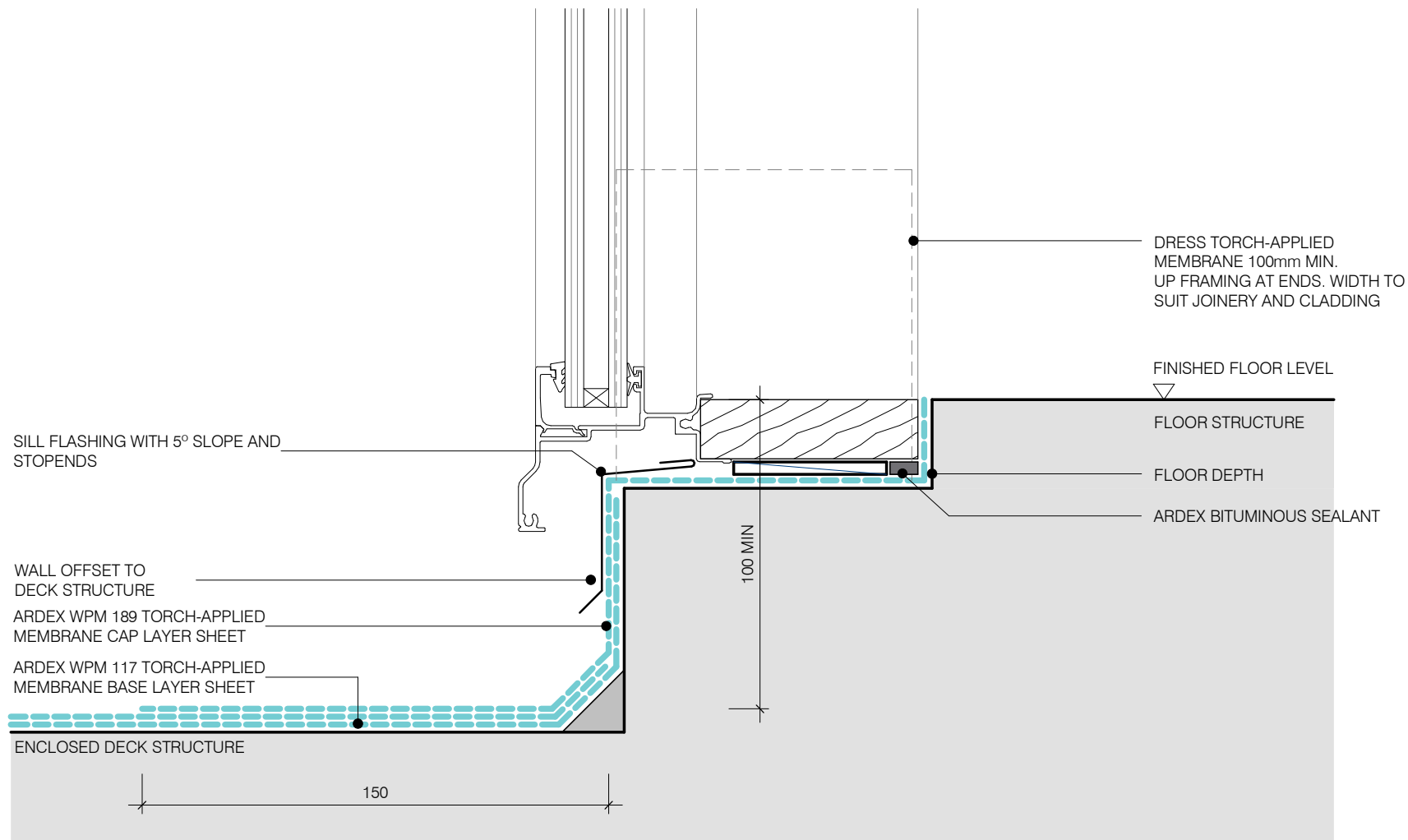
05/04/2019

SCALE

NOT TO SCALE



Disclaimer: Ardex makes every reasonable effort to ensure that the technical details, recommendations and other information contained in this drawing are accurate and represent our knowledge and experience at the time of design and publication. Ardex reserves the right to change the information without prior notice. Ardex provides the information in good faith with no representations or warranties (whether implied or otherwise), and will not be liable for any losses or damages, whether direct, indirect or consequential whatsoever, whether in contract, negligence or any other action, arising out of or in connection with the use, or inability to use, the information. It is your responsibility to ensure that our products are used only for the purposes for which they are intended and are used in accordance with any applicable specifications, guidelines, standards, codes of practice, regulations and laws. The supply of our products and services are also subject to certain terms, warranties and exclusions which are available on request.



ARDEX TORCH-APPLIED MEMBRANES

THRESHOLD AT OPENING - REBATED

SHEET TITLE

DWG NO.

AT-01

DATE

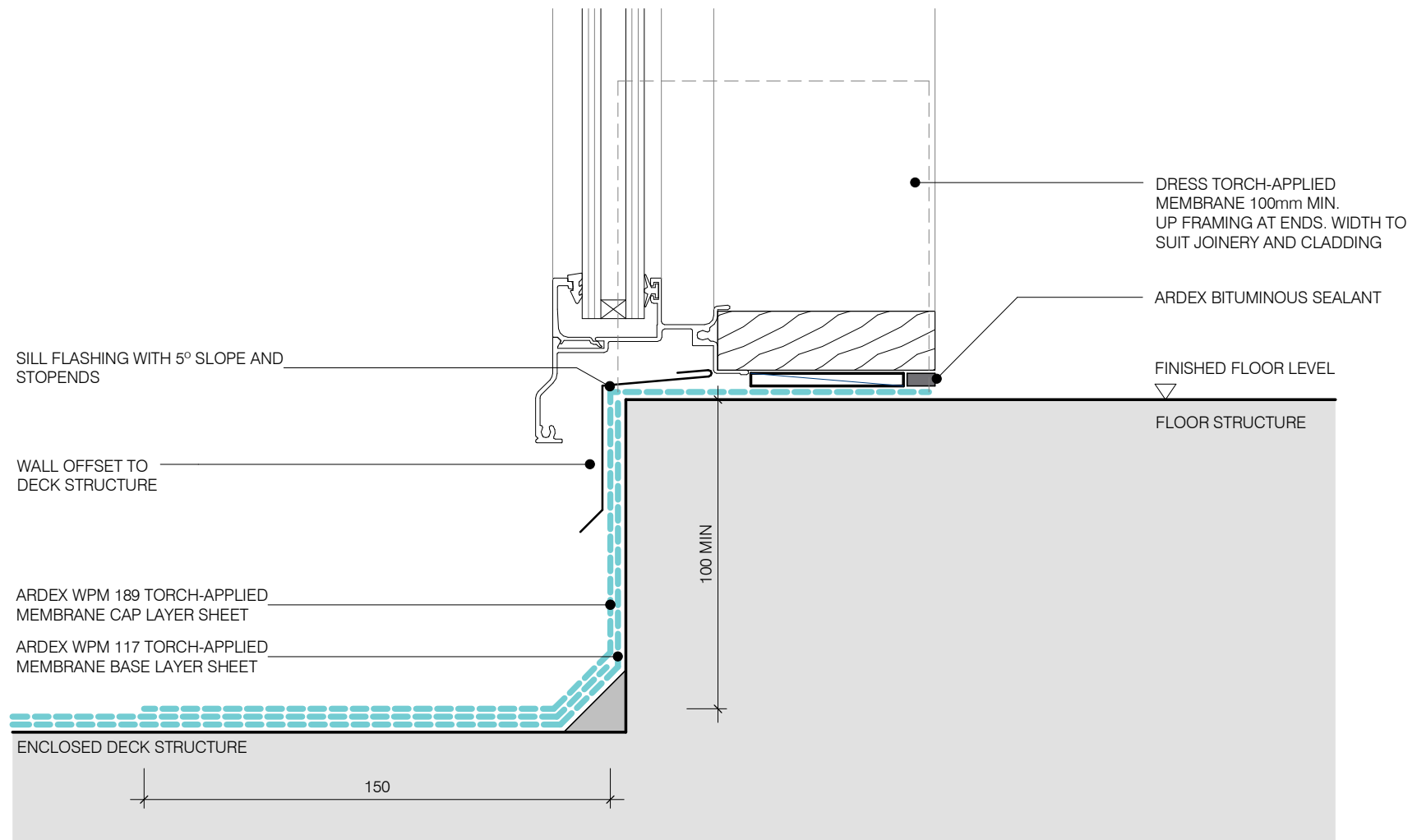
05/04/2019

SCALE

1 : 2 @ A4



Disclaimer: Ardex makes every reasonable effort to ensure that the technical details, recommendations and other information contained in this drawing are accurate and represent our knowledge and experience at the time of design and publication. Ardex reserves the right to change the information without prior notice. Ardex provides the information in good faith with no representations or warranties (whether implied or otherwise), and will not be liable for any losses or damages, whether direct, indirect or consequential whatsoever, whether in contract, negligence or any other action, arising out of or in connection with the use, or inability to use, the information. It is your responsibility to ensure that our products are used only for the purposes for which they are intended and are used in accordance with any applicable specifications, guidelines, standards, codes of practice, regulations and laws. The supply of our products and services are also subject to certain terms, warranties and exclusions which are available on request.



ARDEX TORCH-APPLIED MEMBRANES

THRESHOLD AT OPENING

SHEET TITLE

DWG NO.

AT-02

DATE

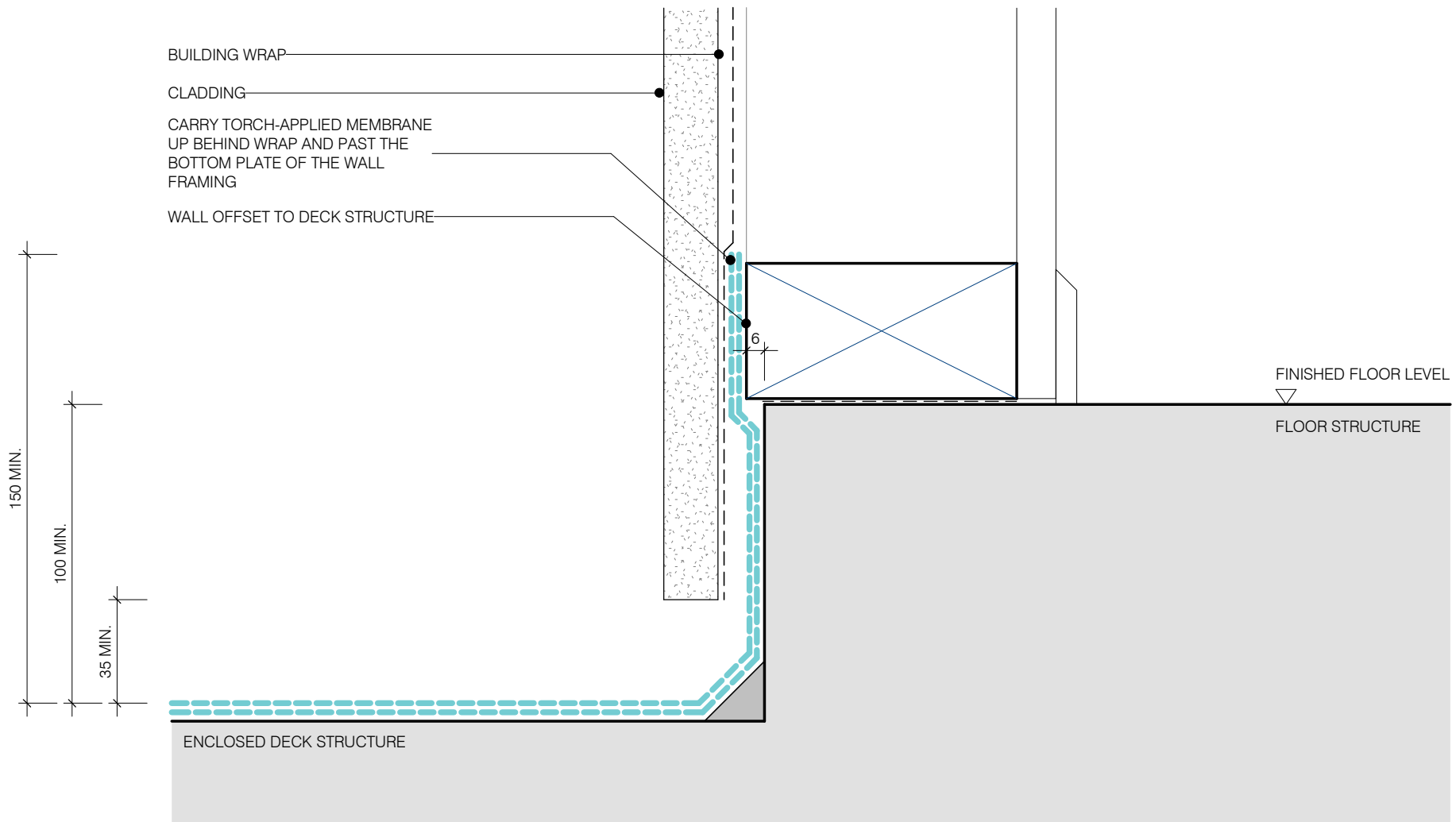
05/04/2019

SCALE

1 : 2 @ A4



Disclaimer: Ardex makes every reasonable effort to ensure that the technical details, recommendations and other information contained in this drawing are accurate and represent our knowledge and experience at the time of design and publication. Ardex reserves the right to change the information without prior notice. Ardex provides the information in good faith with no representations or warranties (whether implied or otherwise), and will not be liable for any losses or damages, whether direct, indirect or consequential whatsoever, whether in contract, negligence or any other action, arising out of or in connection with the use, or inability to use, the information. It is your responsibility to ensure that our products are used only for the purposes for which they are intended and are used in accordance with any applicable specifications, guidelines, standards, codes of practice, regulations and laws. The supply of our products and services are also subject to certain terms, warranties and exclusions which are available on request.



ARDEX TORCH-APPLIED MEMBRANES

BOTTOM PLATE WALL - DIRECT FIXED

SHEET TITLE

DWG NO. **AT-03**

DATE 05/04/2019

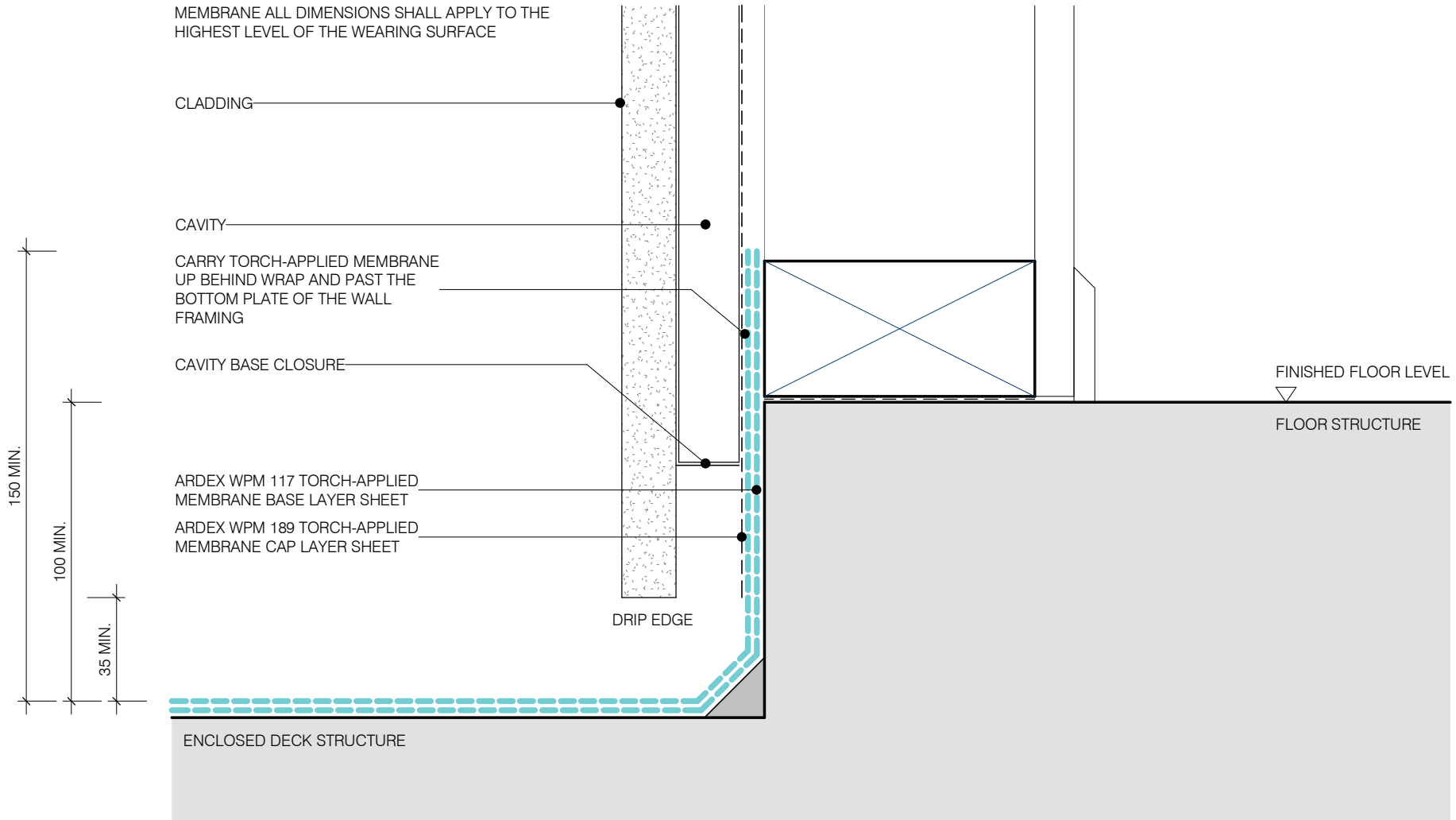
SCALE 1 : 2 @ A4



Disclaimer: Ardex makes every reasonable effort to ensure that the technical details, recommendations and other information contained in this drawing are accurate and represent our knowledge and experience at the time of design and publication. Ardex reserves the right to change the information without prior notice. Ardex provides the information in good faith with no representations or warranties (whether implied or otherwise), and will not be liable for any losses or damages, whether direct, indirect or consequential whatsoever, whether in contract, negligence or any other action, arising out of or in connection with the use, or inability to use, the information. It is your responsibility to ensure that our products are used only for the purposes for which they are intended and are used in accordance with any applicable specifications, guidelines, standards, codes of practice, regulations and laws. The supply of our products and services are also subject to certain terms, warranties and exclusions which are available on request.

NOTE:

- 1). INTERNAL CORNERS TO BE FORMED AS PER DETAIL
- 2). DIMENSIONS ARE SHOWN TO TORCH-APPLIED MEMBRANE. HOWEVER, WHERE THERE IS ADDITIONAL MATERIAL APPLIED OVER THE TORCH-APPLIED MEMBRANE ALL DIMENSIONS SHALL APPLY TO THE HIGHEST LEVEL OF THE WEARING SURFACE



ARDEX TORCH-APPLIED MEMBRANES

BOTTOM PLATE WALL - CAVITY

SHEET TITLE

DWG NO.

AT-04

DATE

05/04/2019

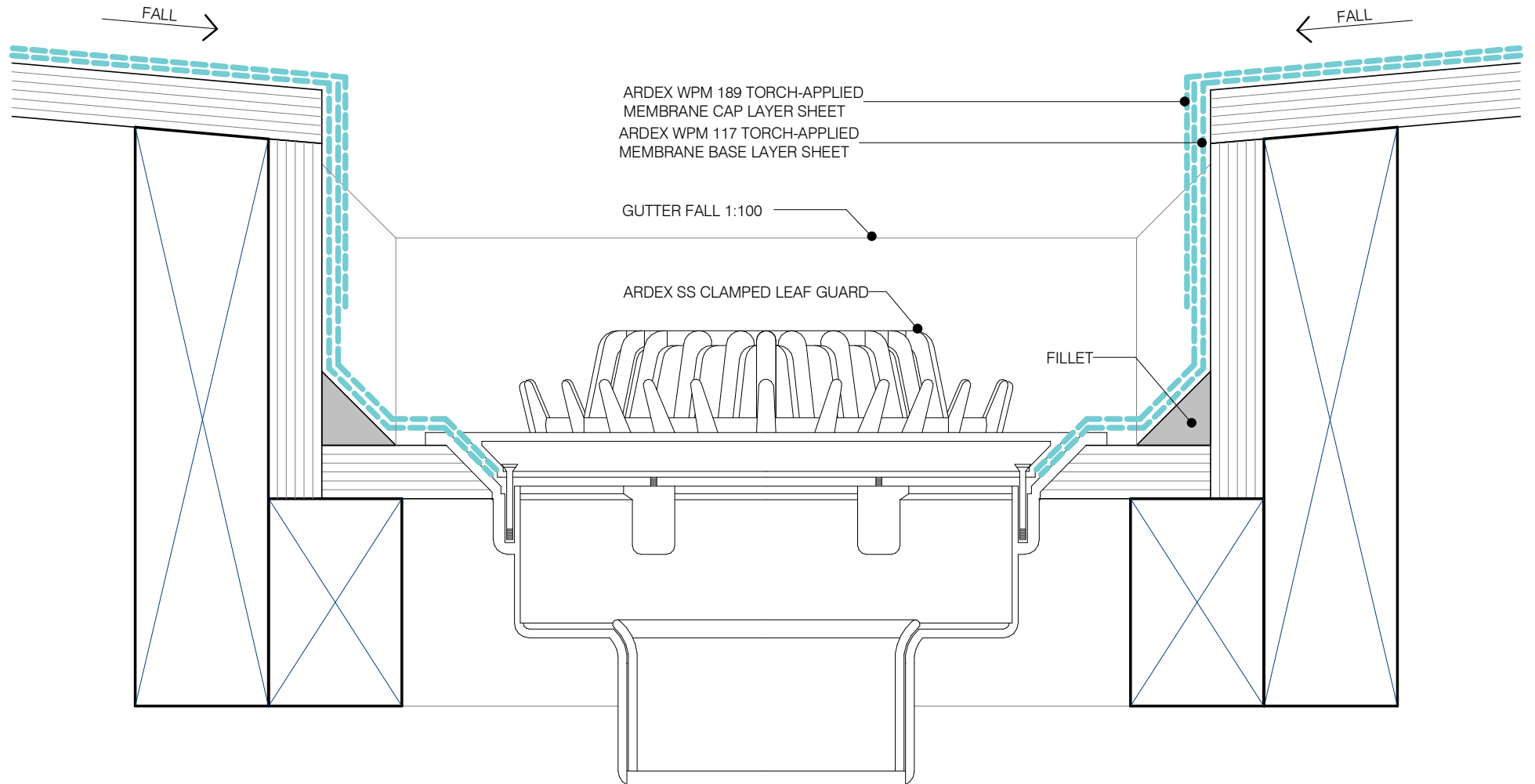
SCALE

1 : 2 @ A4



Disclaimer: Ardex makes every reasonable effort to ensure that the technical details, recommendations and other information contained in this drawing are accurate and represent our knowledge and experience at the time of design and publication. Ardex reserves the right to change the information without prior notice. Ardex provides the information in good faith with no representations or warranties (whether implied or otherwise), and will not be liable for any losses or damages, whether direct, indirect or consequential whatsoever, whether in contract, negligence or any other action, arising out of or in connection with the use, or inability to use, the information. It is your responsibility to ensure that our products are used only for the purposes for which they are intended and are used in accordance with any applicable specifications, guidelines, standards, codes of practice, regulations and laws. The supply of our products and services are also subject to certain terms, warranties and exclusions which are available on request.

300 MIN.
GUTTER WIDTH IN ACCORDANCE WITH NZBC E2/AS1



ARDEX TORCH-APPLIED MEMBRANES

INTERNAL CENTRAL

SHEET TITLE

DWG NO.

AT-05

DATE

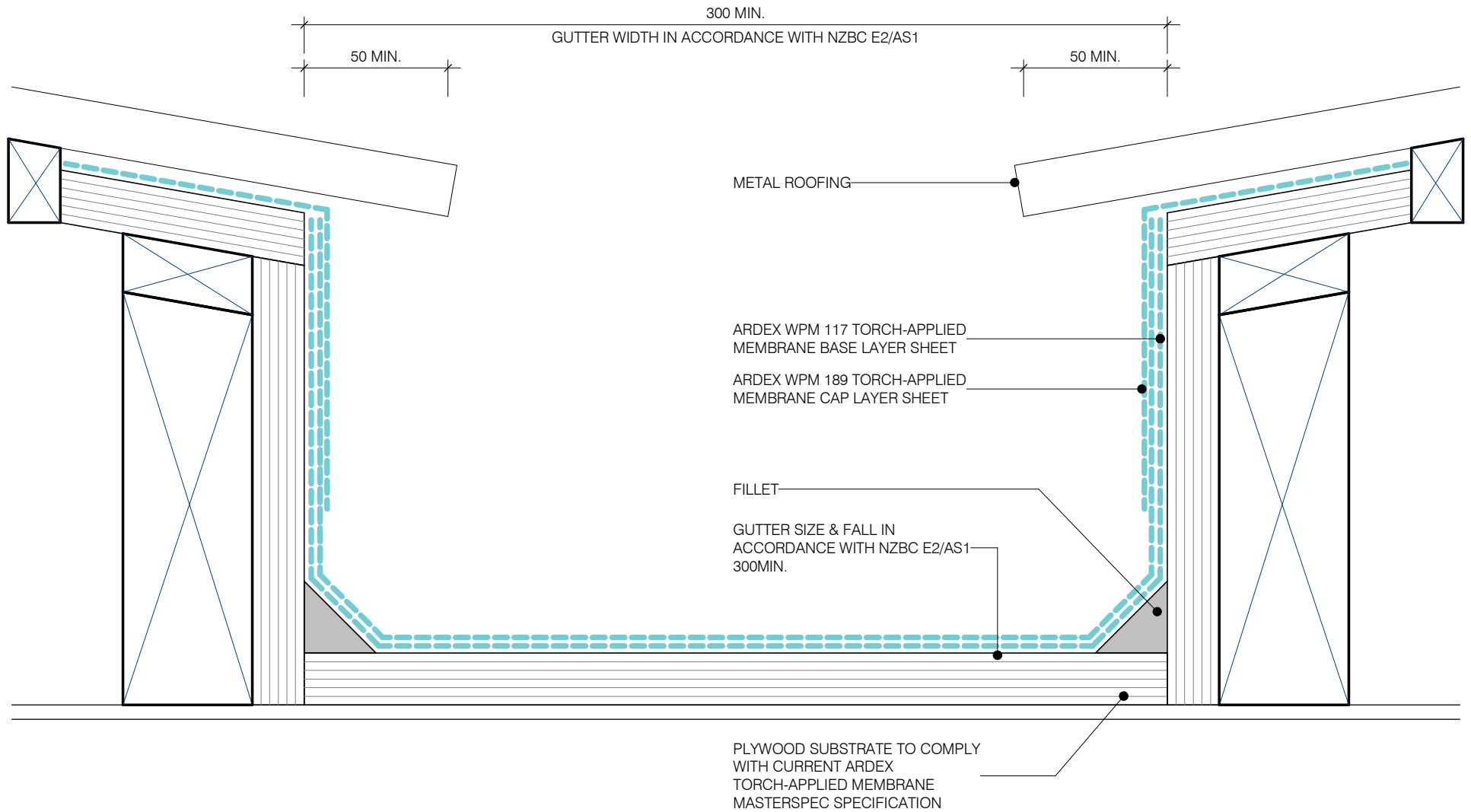
05/04/2019

SCALE

1 : 2 @ A4



Disclaimer: Ardex makes every reasonable effort to ensure that the technical details, recommendations and other information contained in this drawing are accurate and represent our knowledge and experience at the time of design and publication. Ardex reserves the right to change the information without prior notice. Ardex provides the information in good faith with no representations or warranties (whether implied or otherwise), and will not be liable for any losses or damages, whether direct, indirect or consequential whatsoever, whether in contract, negligence or any other action, arising out of or in connection with the use, or inability to use, the information. It is your responsibility to ensure that our products are used only for the purposes for which they are intended and are used in accordance with any applicable specifications, guidelines, standards, codes of practice, regulations and laws. The supply of our products and services are also subject to certain terms, warranties and exclusions which are available on request.



ARDEX TORCH-APPLIED MEMBRANES

INTERNAL GUTTER

SHEET TITLE

DWG NO.

AT-06

DATE

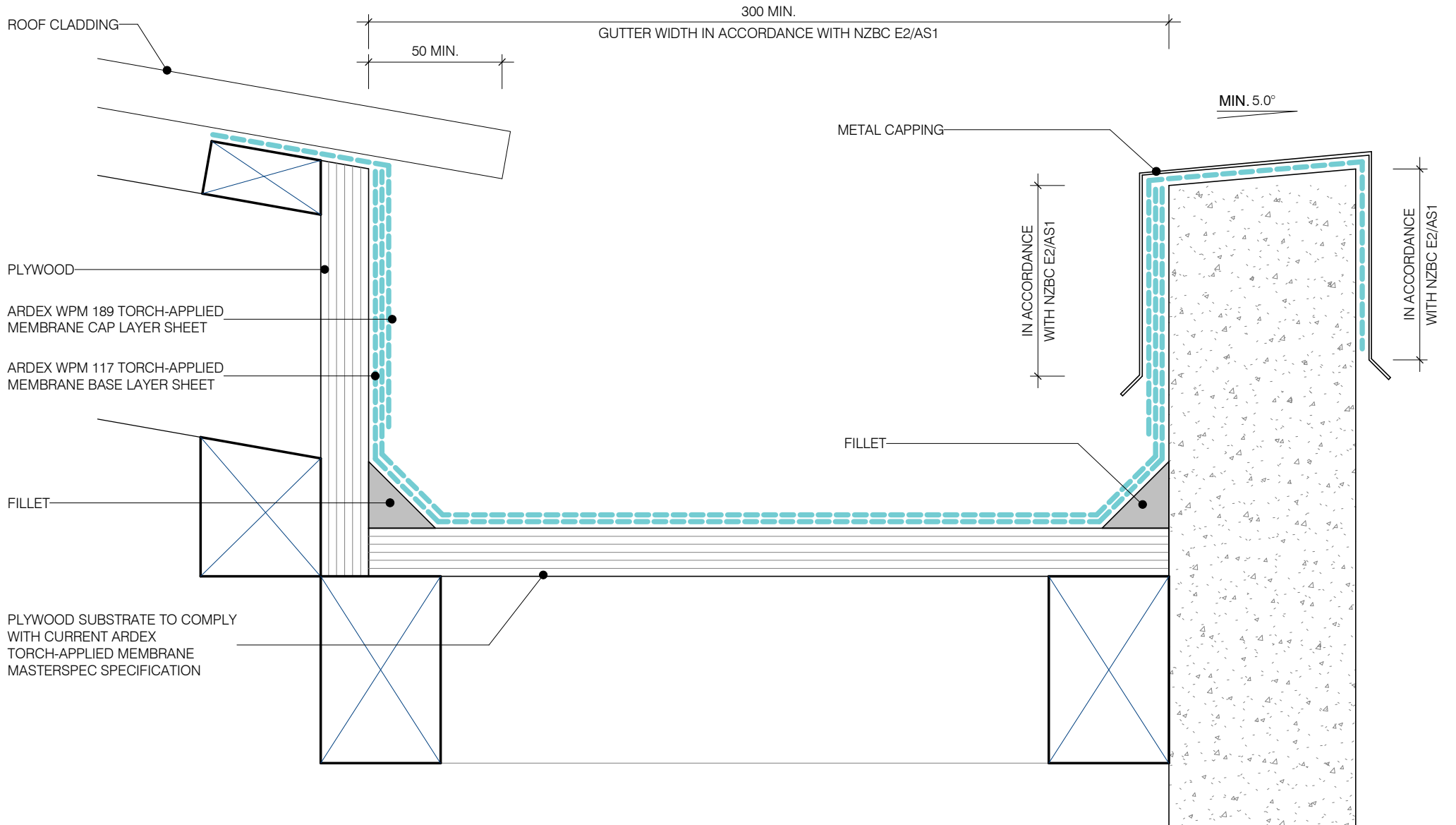
05/04/2019

SCALE

1 : 2 @ A4



Disclaimer: Ardex makes every reasonable effort to ensure that the technical details, recommendations and other information contained in this drawing are accurate and represent our knowledge and experience at the time of design and publication. Ardex reserves the right to change the information without prior notice. Ardex provides the information in good faith with no representations or warranties (whether implied or otherwise), and will not be liable for any losses or damages, whether direct, indirect or consequential whatsoever, whether in contract, negligence or any other action, arising out of or in connection with the use, or inability to use, the information. It is your responsibility to ensure that our products are used only for the purposes for which they are intended and are used in accordance with any applicable specifications, guidelines, standards, codes of practice, regulations and laws. The supply of our products and services are also subject to certain terms, warranties and exclusions which are available on request.



ARDEX TORCH-APPLIED MEMBRANES

BOX GUTTER & PARAPET DOWNTURN

SHEET TITLE

DWG NO.

AT-07

DATE

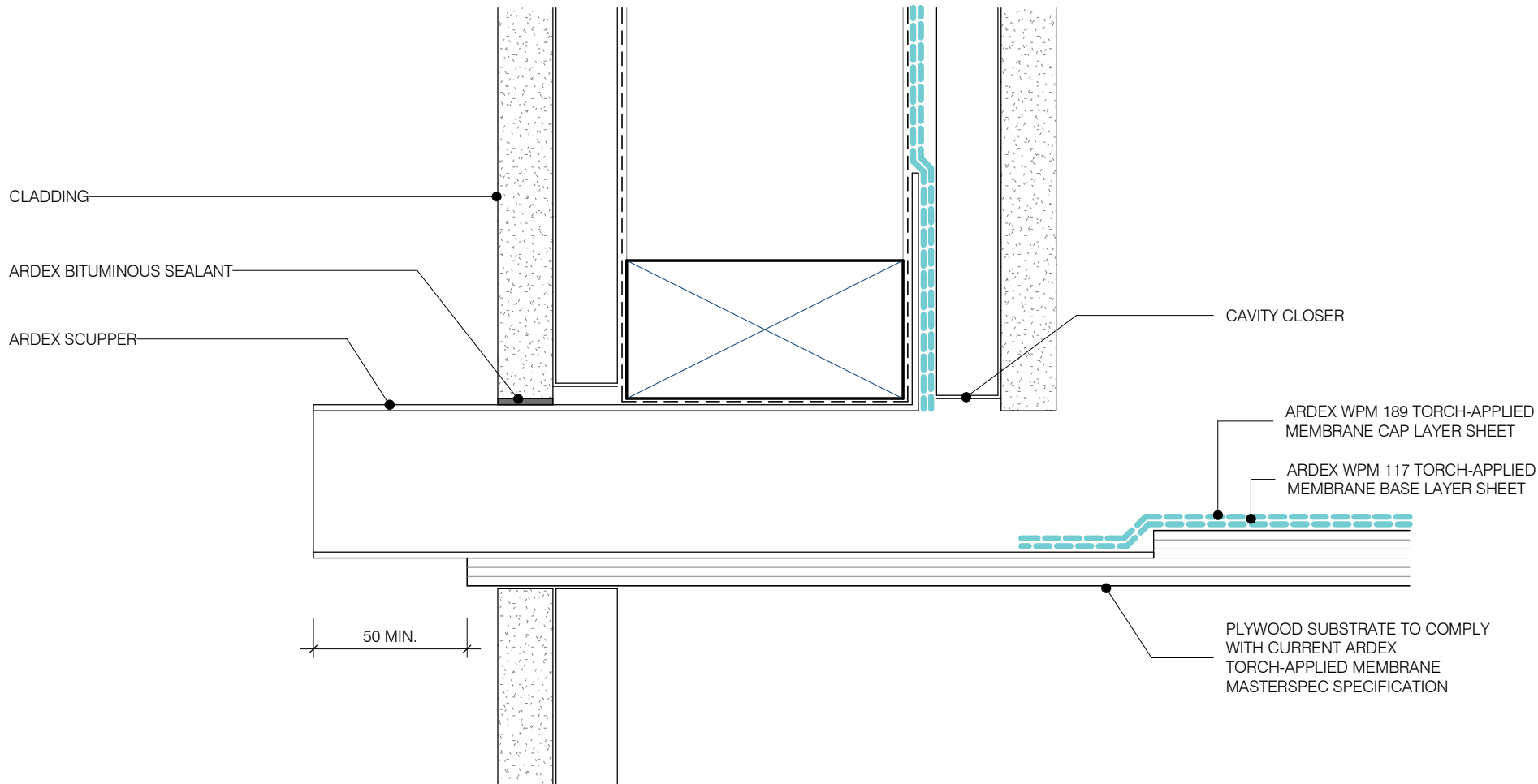
05/04/2019

SCALE

1 : 2 @ A4



Disclaimer: Ardex makes every reasonable effort to ensure that the technical details, recommendations and other information contained in this drawing are accurate and represent our knowledge and experience at the time of design and publication. Ardex reserves the right to change the information without prior notice. Ardex provides the information in good faith with no representations or warranties (whether implied or otherwise), and will not be liable for any losses or damages, whether direct, indirect or consequential whatsoever, whether in contract, negligence or any other action, arising out of or in connection with the use, or inability to use, the information. It is your responsibility to ensure that our products are used only for the purposes for which they are intended and are used in accordance with any applicable specifications, guidelines, standards, codes of practice, regulations and laws. The supply of our products and services are also subject to certain terms, warranties and exclusions which are available on request.



ARDEX TORCH-APPLIED MEMBRANES

OVERFLOW
SHEET TITLE

DWG NO.

AT-08

DATE

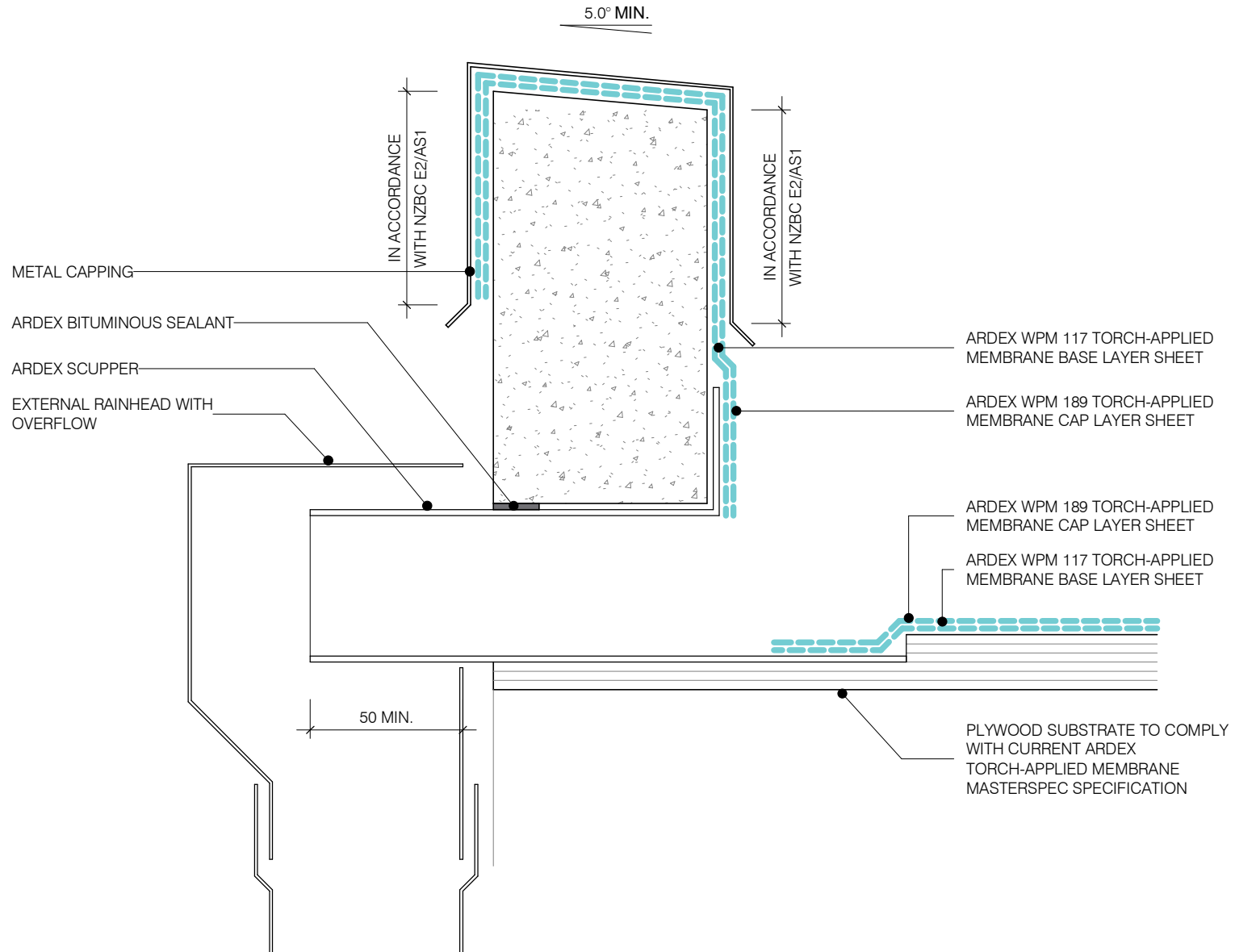
05/04/2019

SCALE

1 : 2 @ A4



Disclaimer: Ardex makes every reasonable effort to ensure that the technical details, recommendations and other information contained in this drawing are accurate and represent our knowledge and experience at the time of design and publication. Ardex reserves the right to change the information without prior notice. Ardex provides the information in good faith with no representations or warranties (whether implied or otherwise), and will not be liable for any losses or damages, whether direct, indirect or consequential whatsoever, whether in contract, negligence or any other action, arising out of or in connection with the use, or inability to use, the information. It is your responsibility to ensure that our products are used only for the purposes for which they are intended and are used in accordance with any applicable specifications, guidelines, standards, codes of practice, regulations and laws. The supply of our products and services are also subject to certain terms, warranties and exclusions which are available on request.



ARDEX TORCH-APPLIED MEMBRANES

SCUPPER OUTLET

SHEET TITLE

DWG NO.

AT-09

DATE

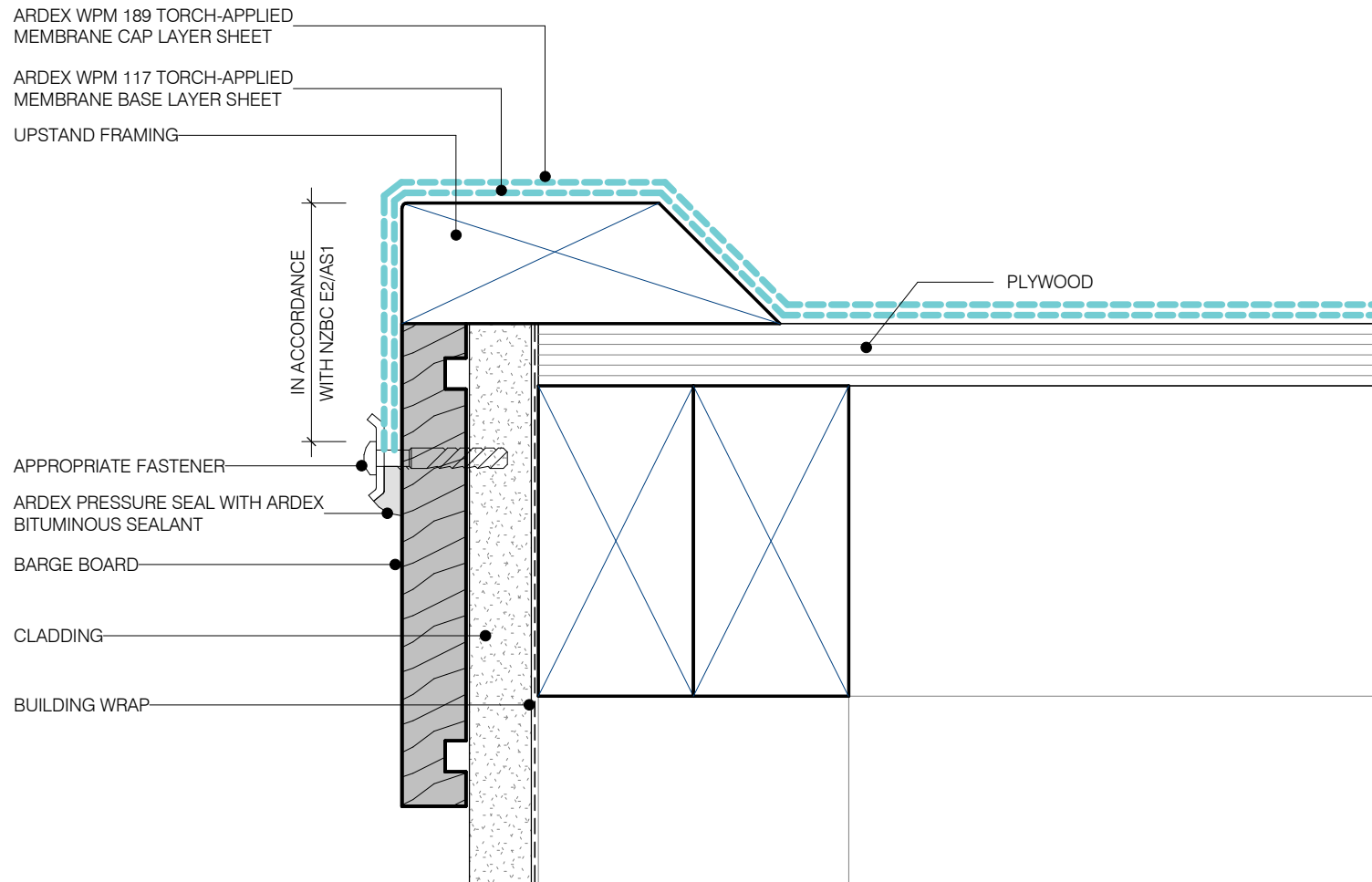
05/04/2019

SCALE

1 : 2 @ A4



Disclaimer: Ardex makes every reasonable effort to ensure that the technical details, recommendations and other information contained in this drawing are accurate and represent our knowledge and experience at the time of design and publication. Ardex reserves the right to change the information without prior notice. Ardex provides the information in good faith with no representations or warranties (whether implied or otherwise), and will not be liable for any losses or damages, whether direct, indirect or consequential whatsoever, whether in contract, negligence or any other action, arising out of or in connection with the use, or inability to use, the information. It is your responsibility to ensure that our products are used only for the purposes for which they are intended and are used in accordance with any applicable specifications, guidelines, standards, codes of practice, regulations and laws. The supply of our products and services are also subject to certain terms, warranties and exclusions which are available on request.



ARDEX TORCH-APPLIED MEMBRANES

EAVES & VERGE

SHEET TITLE

DWG NO. **AT-10**

DATE 05/04/2019

SCALE 1 : 2 @ A4

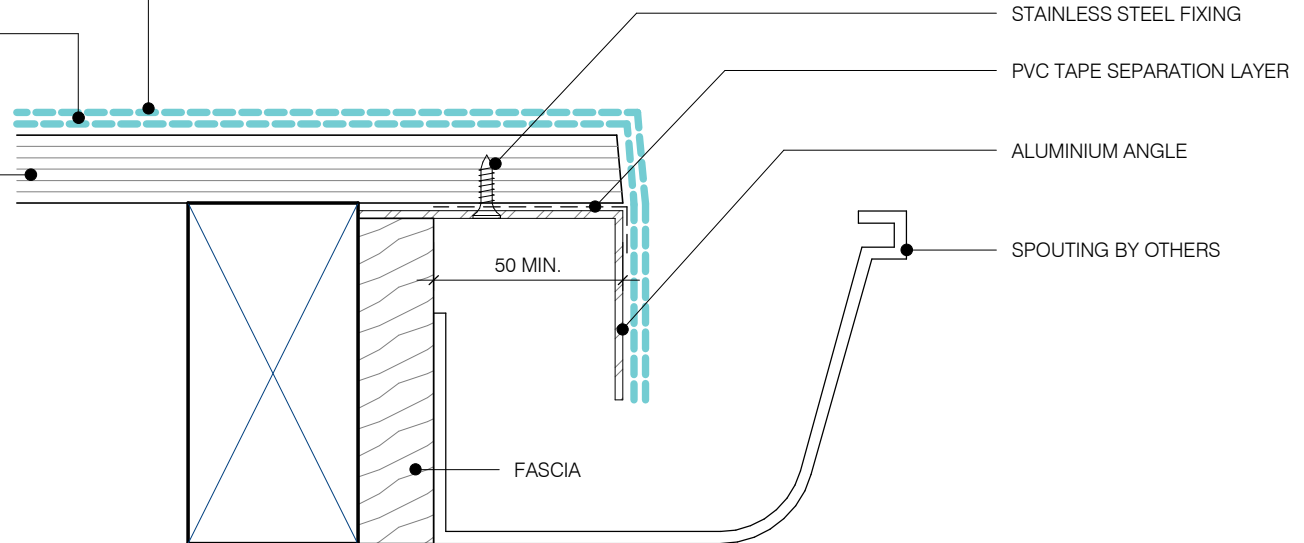


Disclaimer: Ardex makes every reasonable effort to ensure that the technical details, recommendations and other information contained in this drawing are accurate and represent our knowledge and experience at the time of design and publication. Ardex reserves the right to change the information without prior notice. Ardex provides the information in good faith with no representations or warranties (whether implied or otherwise), and will not be liable for any losses or damages, whether direct, indirect or consequential whatsoever, whether in contract, negligence or any other action, arising out of or in connection with the use, or inability to use, the information. It is your responsibility to ensure that our products are used only for the purposes for which they are intended and are used in accordance with any applicable specifications, guidelines, standards, codes of practice, regulations and laws. The supply of our products and services are also subject to certain terms, warranties and exclusions which are available on request.

ARDEX WPM 189 TORCH-APPLIED
MEMBRANE CAP LAYER SHEET

ARDEX WPM 117 TORCH-APPLIED
MEMBRANE BASE LAYER SHEET

PLYWOOD SUBSTRATE TO COMPLY
WITH CURRENT ARDEX
TORCH-APPLIED MEMBRANE
MASTERSPEC SPECIFICATION



STAINLESS STEEL FIXING

PVC TAPE SEPARATION LAYER

ALUMINIUM ANGLE

SPOUTING BY OTHERS

50 MIN.

FASCIA

ARDEX TORCH-APPLIED MEMBRANES

SPOUTING
SHEET TITLE

DWG NO.

AT-11

DATE

05/04/2019

SCALE

1 : 2 @ A4



Disclaimer: Ardex makes every reasonable effort to ensure that the technical details, recommendations and other information contained in this drawing are accurate and represent our knowledge and experience at the time of design and publication. Ardex reserves the right to change the information without prior notice. Ardex provides the information in good faith with no representations or warranties (whether implied or otherwise), and will not be liable for any losses or damages, whether direct, indirect or consequential whatsoever, whether in contract, negligence or any other action, arising out of or in connection with the use, or inability to use, the information. It is your responsibility to ensure that our products are used only for the purposes for which they are intended and are used in accordance with any applicable specifications, guidelines, standards, codes of practice, regulations and laws. The supply of our products and services are also subject to certain terms, warranties and exclusions which are available on request.

NOTE:

- 1). FOR MAX PENETRATION SIZE 1200x1200mm
- 2). EXTERNAL CORNERS TO BE FORMED AS SHOWN

OVER FLASHING FROM ROOFLIGHT,
VENT ETC

ARDEX WPM 117 TORCH-APPLIED
MEMBRANE BASE LAYER SHEET

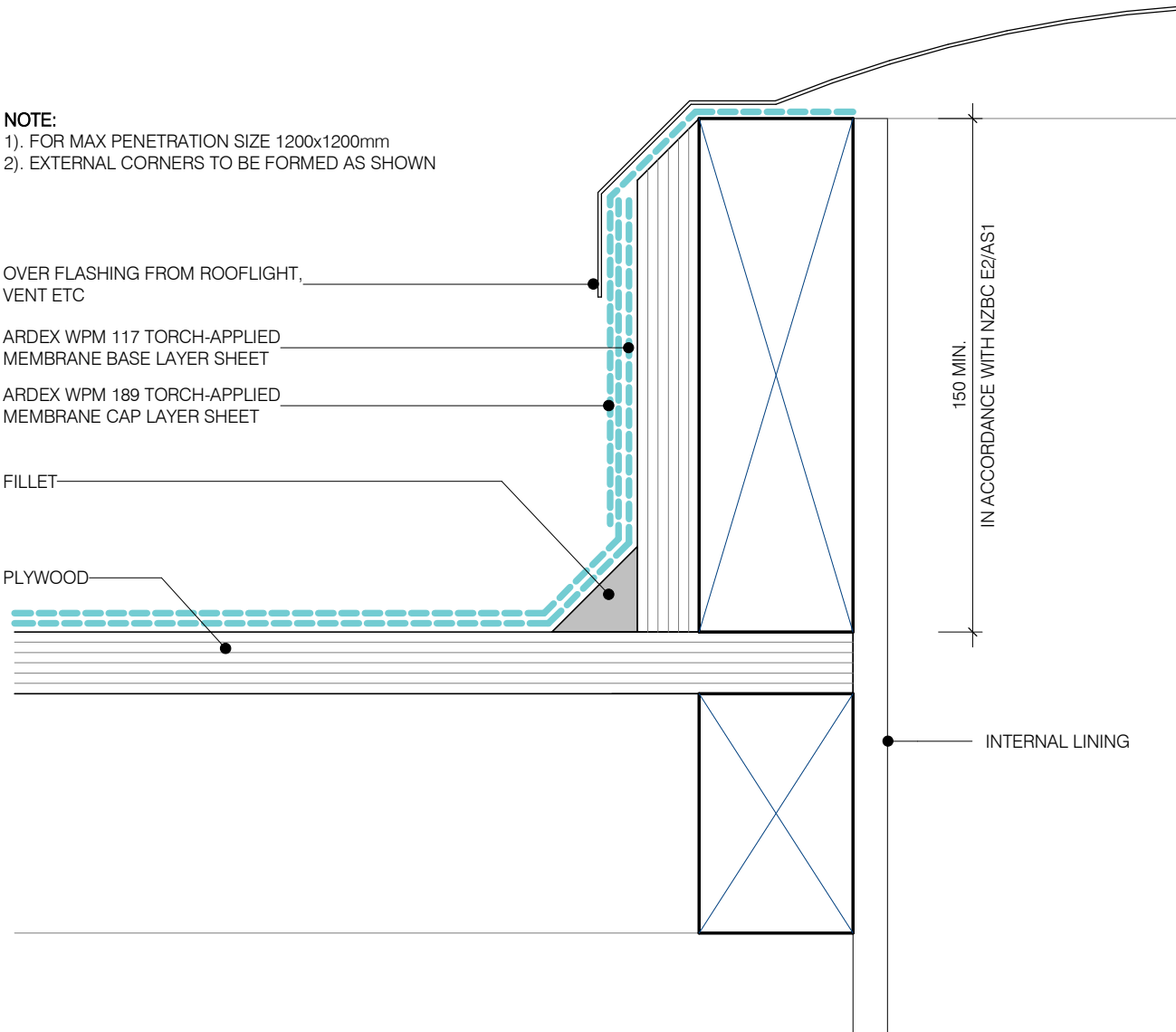
ARDEX WPM 189 TORCH-APPLIED
MEMBRANE CAP LAYER SHEET

FILLET

PLYWOOD

150 MIN.
IN ACCORDANCE WITH NZBC E2/AS1

INTERNAL LINING



ARDEX TORCH-APPLIED MEMBRANES

ROOF PENETRATION

SHEET TITLE

DWG NO.

AT-12

DATE

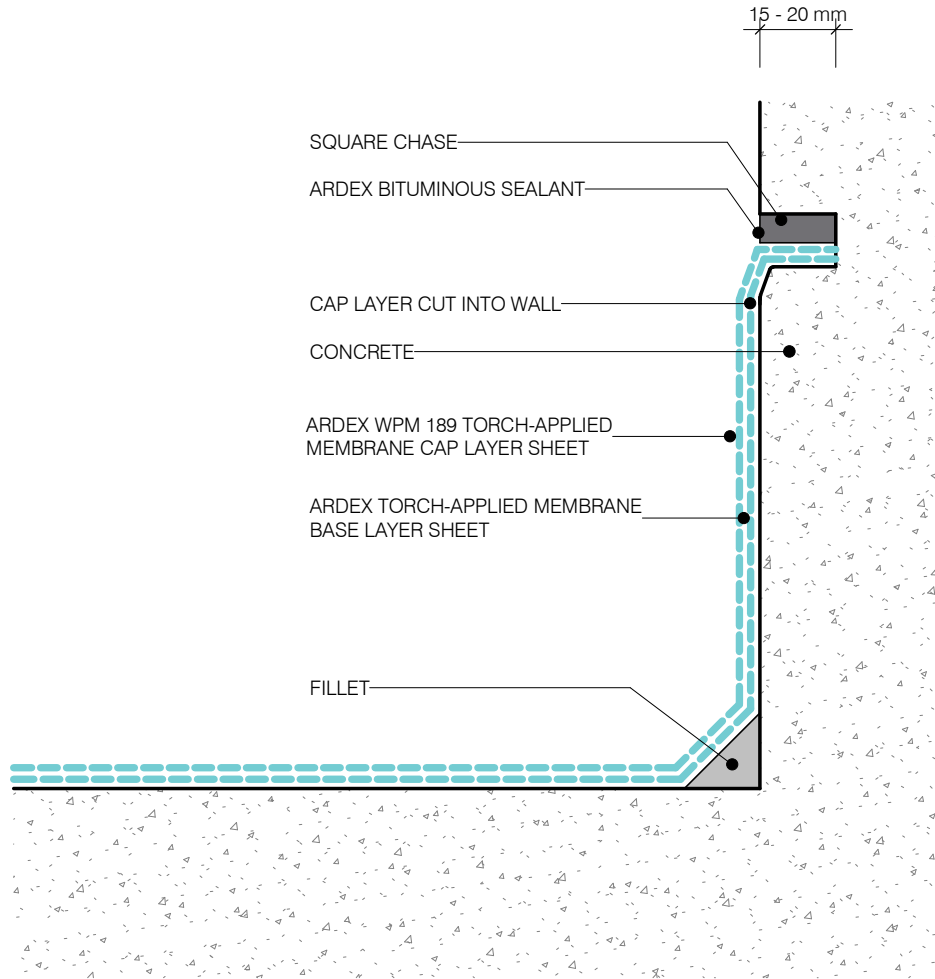
05/04/2019

SCALE

1 : 2 @ A4



Disclaimer: Ardex makes every reasonable effort to ensure that the technical details, recommendations and other information contained in this drawing are accurate and represent our knowledge and experience at the time of design and publication. Ardex reserves the right to change the information without prior notice. Ardex provides the information in good faith with no representations or warranties (whether implied or otherwise), and will not be liable for any losses or damages, whether direct, indirect or consequential whatsoever, whether in contract, negligence or any other action, arising out of or in connection with the use, or inability to use, the information. It is your responsibility to ensure that our products are used only for the purposes for which they are intended and are used in accordance with any applicable specifications, guidelines, standards, codes of practice, regulations and laws. The supply of our products and services are also subject to certain terms, warranties and exclusions which are available on request.



NOTE:
 ARDEX TORCH SQUARE CHASE AND FINISHED WITH
 ARDEX BITUMINOUS SEALANT

ARDEX TORCH-APPLIED MEMBRANES

FLASHING INTO CONCRETE WALLS - CHASE

SHEET TITLE

DWG NO.

AT-13

DATE

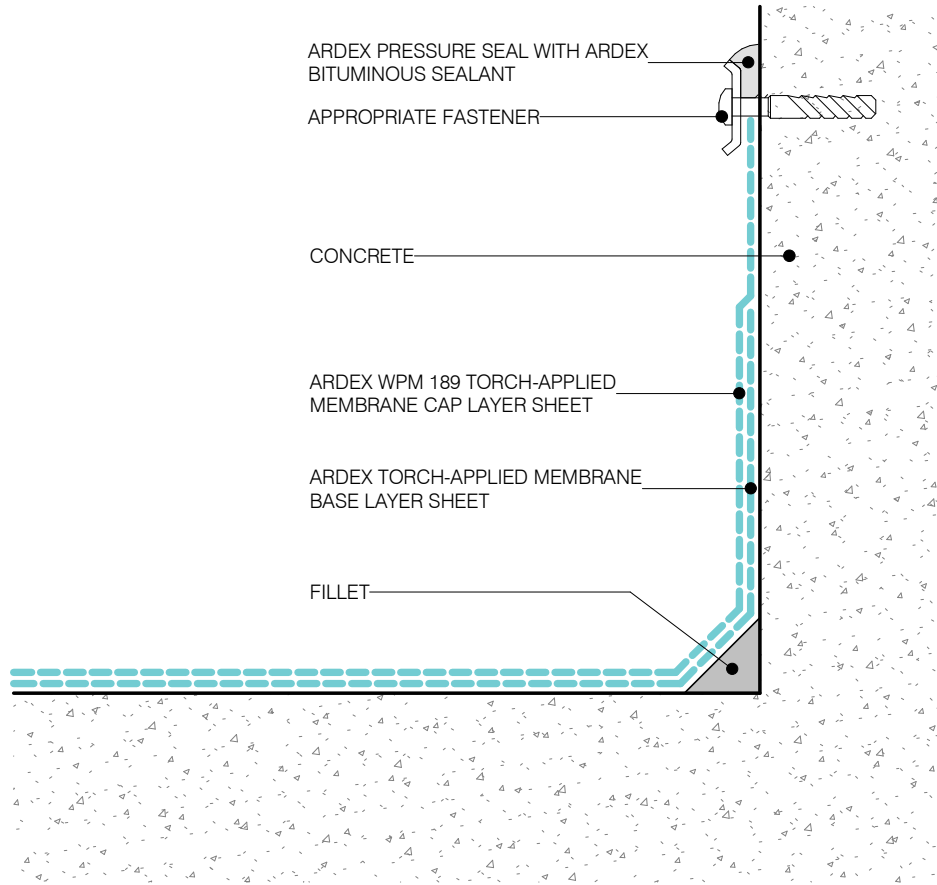
05/04/2019

SCALE

1 : 2 @ A4



Disclaimer: Ardex makes every reasonable effort to ensure that the technical details, recommendations and other information contained in this drawing are accurate and represent our knowledge and experience at the time of design and publication. Ardex reserves the right to change the information without prior notice. Ardex provides the information in good faith with no representations or warranties (whether implied or otherwise), and will not be liable for any losses or damages, whether direct, indirect or consequential whatsoever, whether in contract, negligence or any other action, arising out of or in connection with the use, or inability to use, the information. It is your responsibility to ensure that our products are used only for the purposes for which they are intended and are used in accordance with any applicable specifications, guidelines, standards, codes of practice, regulations and laws. The supply of our products and services are also subject to certain terms, warranties and exclusions which are available on request.



ARDEX TORCH-APPLIED MEMBRANES

FLASHING INTO CONCRETE WALLS - MECHANICAL

SHEET TITLE

DWG NO.

AT-14

DATE

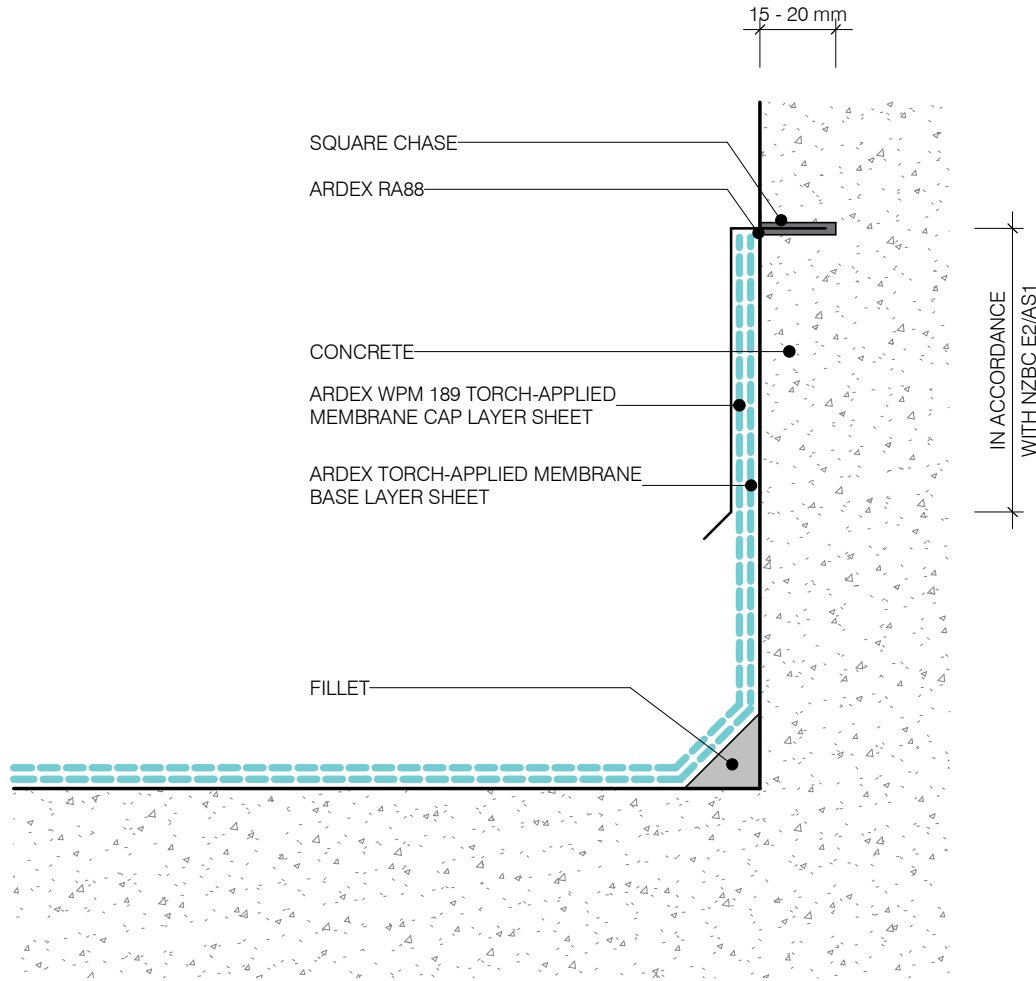
05/04/2019

SCALE

1 : 2 @ A4



Disclaimer: Ardex makes every reasonable effort to ensure that the technical details, recommendations and other information contained in this drawing are accurate and represent our knowledge and experience at the time of design and publication. Ardex reserves the right to change the information without prior notice. Ardex provides the information in good faith with no representations or warranties (whether implied or otherwise), and will not be liable for any losses or damages, whether direct, indirect or consequential whatsoever, whether in contract, negligence or any other action, arising out of or in connection with the use, or inability to use, the information. It is your responsibility to ensure that our products are used only for the purposes for which they are intended and are used in accordance with any applicable specifications, guidelines, standards, codes of practice, regulations and laws. The supply of our products and services are also subject to certain terms, warranties and exclusions which are available on request.



NOTE:
 ARDEX TORCH-APPLIED MEMBRANE COVERED BY
 FLASHING THAT IS CHASED AND FINISHED WITH
 ARDEX RA88 SEALANT

ARDEX TORCH-APPLIED MEMBRANES

FLASHING INTO CONCRETE WALLS - FLASHING

SHEET TITLE

DWG NO.

AT-15

DATE

05/04/2019

SCALE

1 : 2 @ A4



Disclaimer: Ardex makes every reasonable effort to ensure that the technical details, recommendations and other information contained in this drawing are accurate and represent our knowledge and experience at the time of design and publication. Ardex reserves the right to change the information without prior notice. Ardex provides the information in good faith with no representations or warranties (whether implied or otherwise), and will not be liable for any losses or damages, whether direct, indirect or consequential whatsoever, whether in contract, negligence or any other action, arising out of or in connection with the use, or inability to use, the information. It is your responsibility to ensure that our products are used only for the purposes for which they are intended and are used in accordance with any applicable specifications, guidelines, standards, codes of practice, regulations and laws. The supply of our products and services are also subject to certain terms, warranties and exclusions which are available on request.

ARDEX LO RISE VENT INSTALLED
OVER INTERSECTION OF VENT TAPES
ON PLYWOOD SUBSTRATE

ARDEX WPM 189 TORCH-APPLIED
MEMBRANE CAP LAYER SHEET

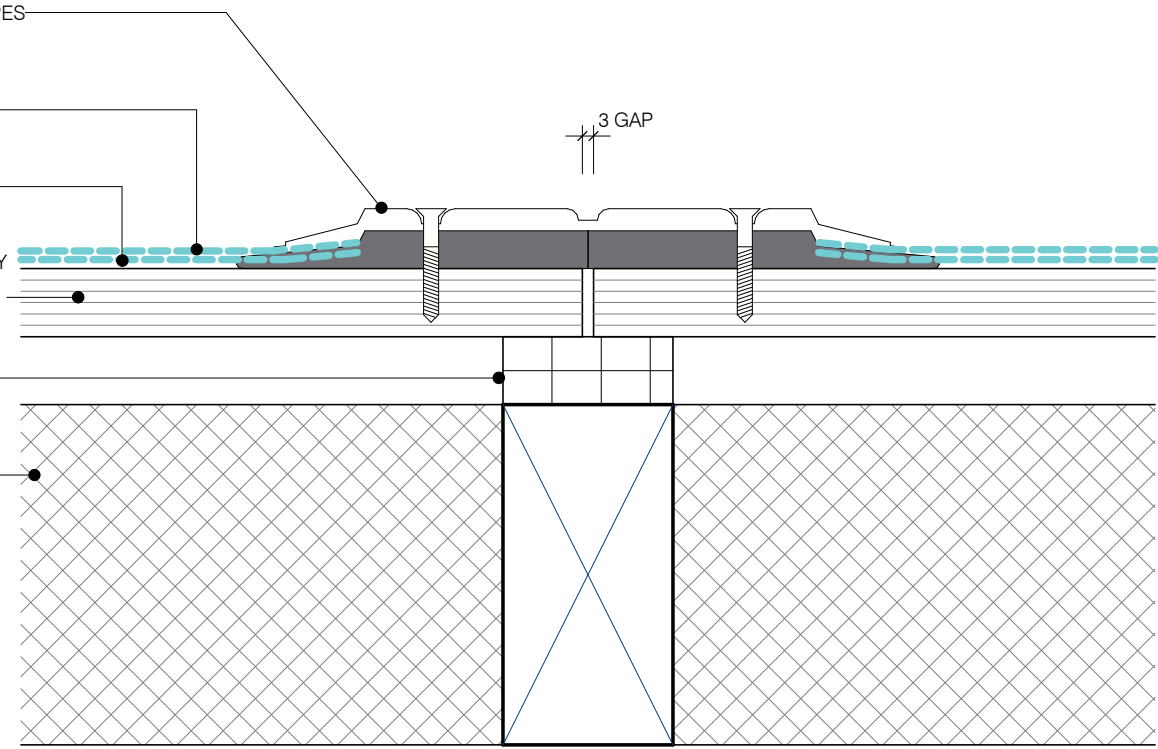
ARDEX WPM 117 TORCH-APPLIED
MEMBRANE BASE LAYER SHEET

PLYWOOD SUBSTRATE TO COMPLY
WITH CURRENT ARDEX
TORCH-APPLIED MEMBRANE
MASTERSPEC SPECIFICATION

CAVIBAT BATTEN

CEILING INSULATION

3 GAP



ARDEX TORCH-APPLIED MEMBRANES

ONE WAY SUBSTRATE VENTILATOR

SHEET TITLE

DWG NO. **AT-16**

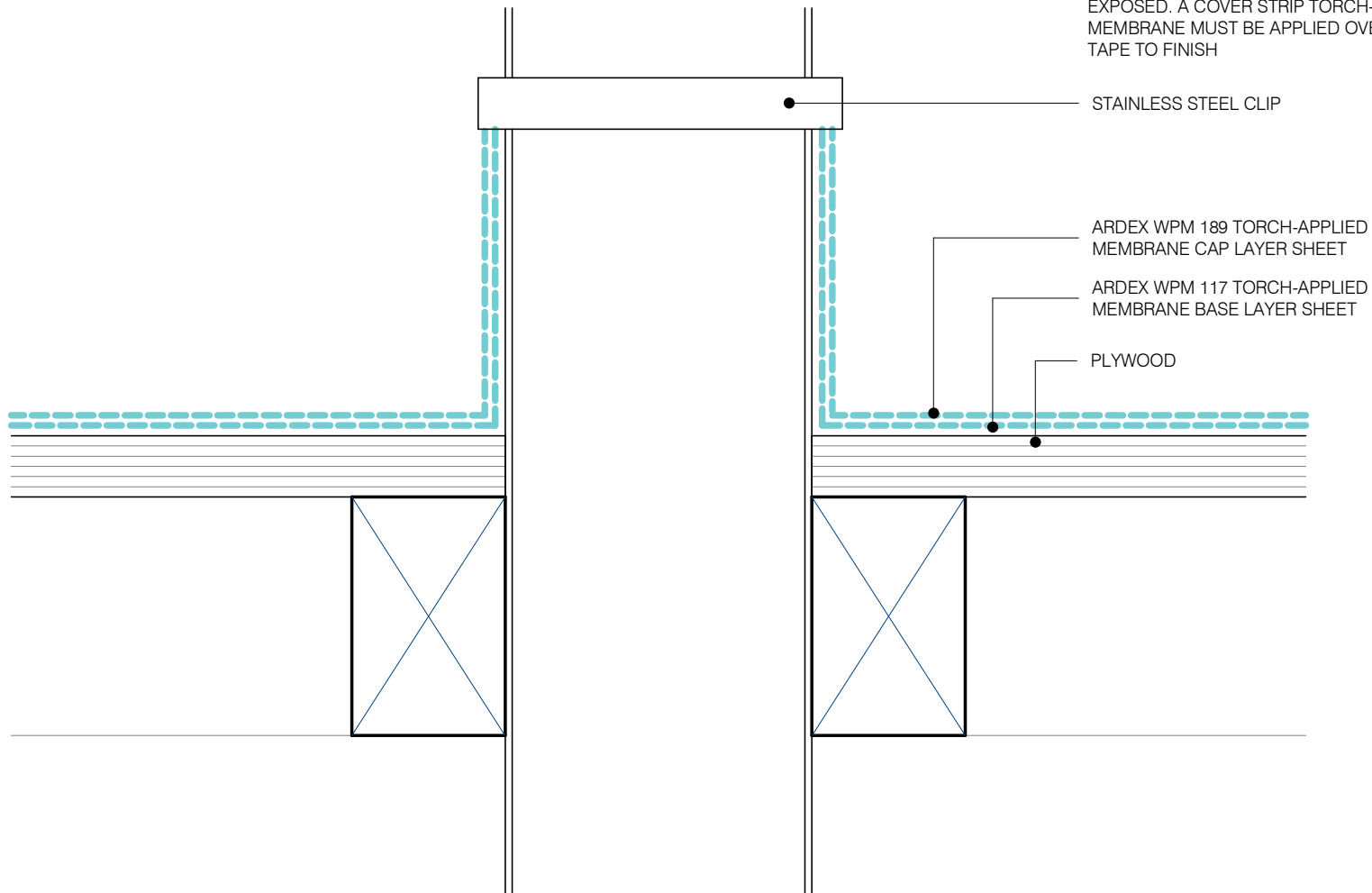
DATE 05/04/2019

SCALE 1 : 2 @ A4



Disclaimer: Ardex makes every reasonable effort to ensure that the technical details, recommendations and other information contained in this drawing are accurate and represent our knowledge and experience at the time of design and publication. Ardex reserves the right to change the information without prior notice. Ardex provides the information in good faith with no representations or warranties (whether implied or otherwise), and will not be liable for any losses or damages, whether direct, indirect or consequential whatsoever, whether in contract, negligence or any other action, arising out of or in connection with the use, or inability to use, the information. It is your responsibility to ensure that our products are used only for the purposes for which they are intended and are used in accordance with any applicable specifications, guidelines, standards, codes of practice, regulations and laws. The supply of our products and services are also subject to certain terms, warranties and exclusions which are available on request.

NOTE:
 IF FLASHING TAPE IS USED IT MUST NOT BE LEFT EXPOSED. A COVER STRIP TORCH-APPLIED MEMBRANE MUST BE APPLIED OVER THE FLASHING TAPE TO FINISH



ARDEX TORCH-APPLIED MEMBRANES

PIPE PENETRATION

SHEET TITLE

DWG NO.

AT-17

DATE

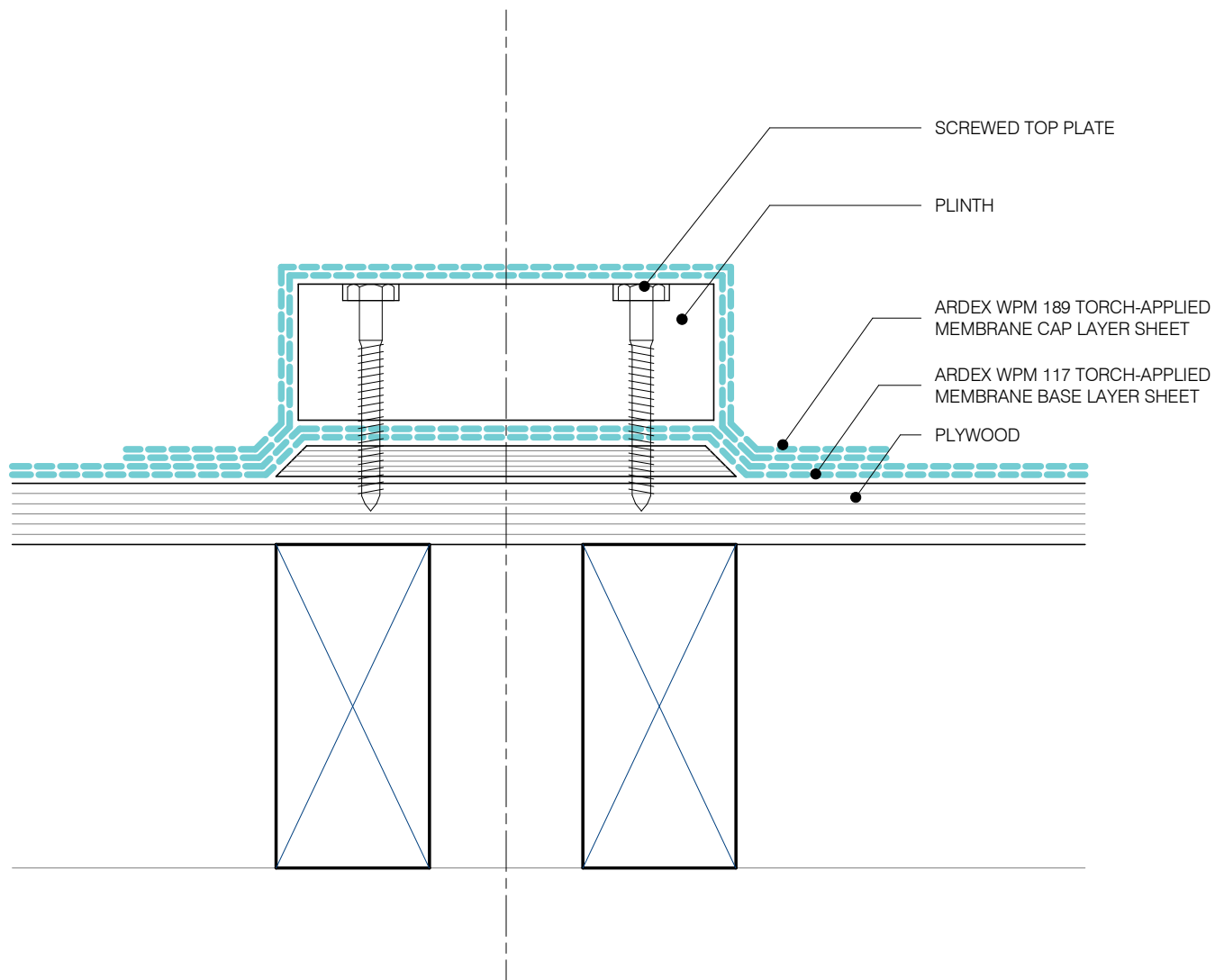
05/04/2019

SCALE

1 : 2 @ A4



Disclaimer: Ardex makes every reasonable effort to ensure that the technical details, recommendations and other information contained in this drawing are accurate and represent our knowledge and experience at the time of design and publication. Ardex reserves the right to change the information without prior notice. Ardex provides the information in good faith with no representations or warranties (whether implied or otherwise), and will not be liable for any losses or damages, whether direct, indirect or consequential whatsoever, whether in contract, negligence or any other action, arising out of or in connection with the use, or inability to use, the information. It is your responsibility to ensure that our products are used only for the purposes for which they are intended and are used in accordance with any applicable specifications, guidelines, standards, codes of practice, regulations and laws. The supply of our products and services are also subject to certain terms, warranties and exclusions which are available on request.



SCREWED TOP PLATE

PLINTH

ARDEX WPM 189 TORCH-APPLIED
MEMBRANE CAP LAYER SHEET

ARDEX WPM 117 TORCH-APPLIED
MEMBRANE BASE LAYER SHEET

PLYWOOD

ARDEX TORCH-APPLIED MEMBRANES

PLANT EQUIPMENT SUPPORTS

SHEET TITLE

DWG NO.

AT-18

DATE

05/04/2019

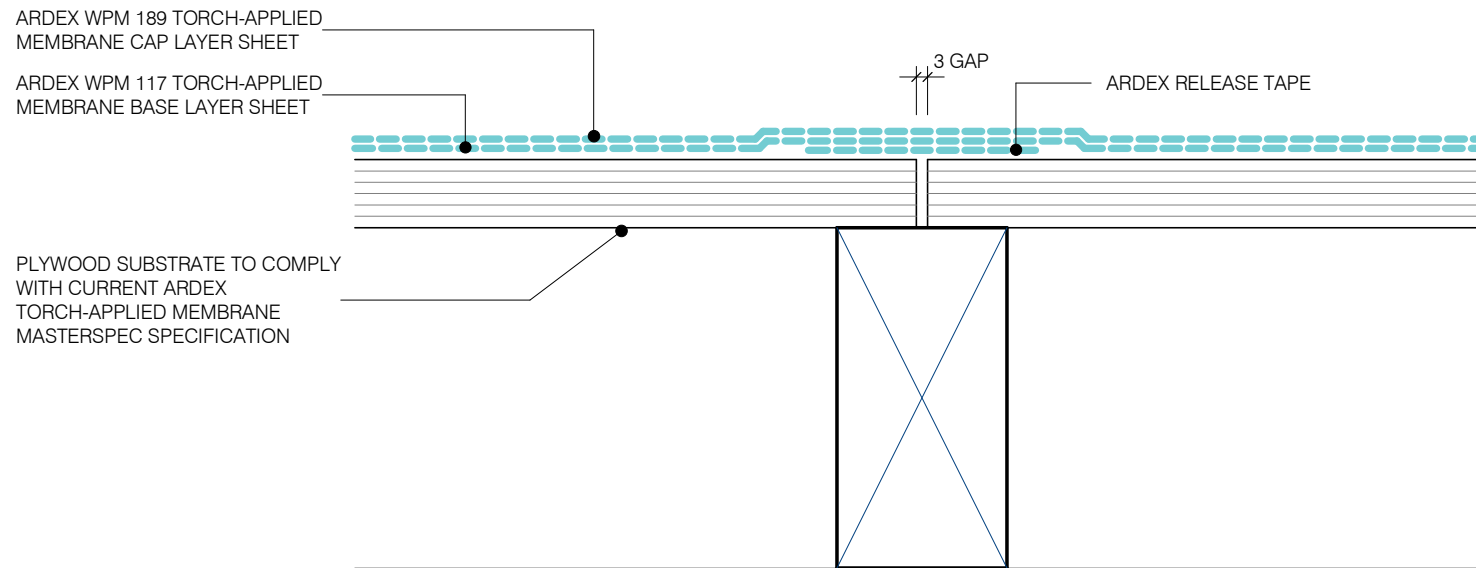
SCALE

1 : 2 @ A4



Disclaimer: Ardex makes every reasonable effort to ensure that the technical details, recommendations and other information contained in this drawing are accurate and represent our knowledge and experience at the time of design and publication. Ardex reserves the right to change the information without prior notice. Ardex provides the information in good faith with no representations or warranties (whether implied or otherwise), and will not be liable for any losses or damages, whether direct, indirect or consequential whatsoever, whether in contract, negligence or any other action, arising out of or in connection with the use, or inability to use, the information. It is your responsibility to ensure that our products are used only for the purposes for which they are intended and are used in accordance with any applicable specifications, guidelines, standards, codes of practice, regulations and laws. The supply of our products and services are also subject to certain terms, warranties and exclusions which are available on request.

NOTE:
 ALL JOINTS BETWEEN SUBSTRATE SHEETS OF
 PLYWOOD SHOULD BE TAPED TO PREVENT
 STRESSING OF THE ARDEX TORCH-APPLIED
 MEMBRANE IN CASE OF MARKED TIMBER
 MOVEMENT



ARDEX TORCH-APPLIED MEMBRANES

TAPING SUBSTRATE

SHEET TITLE

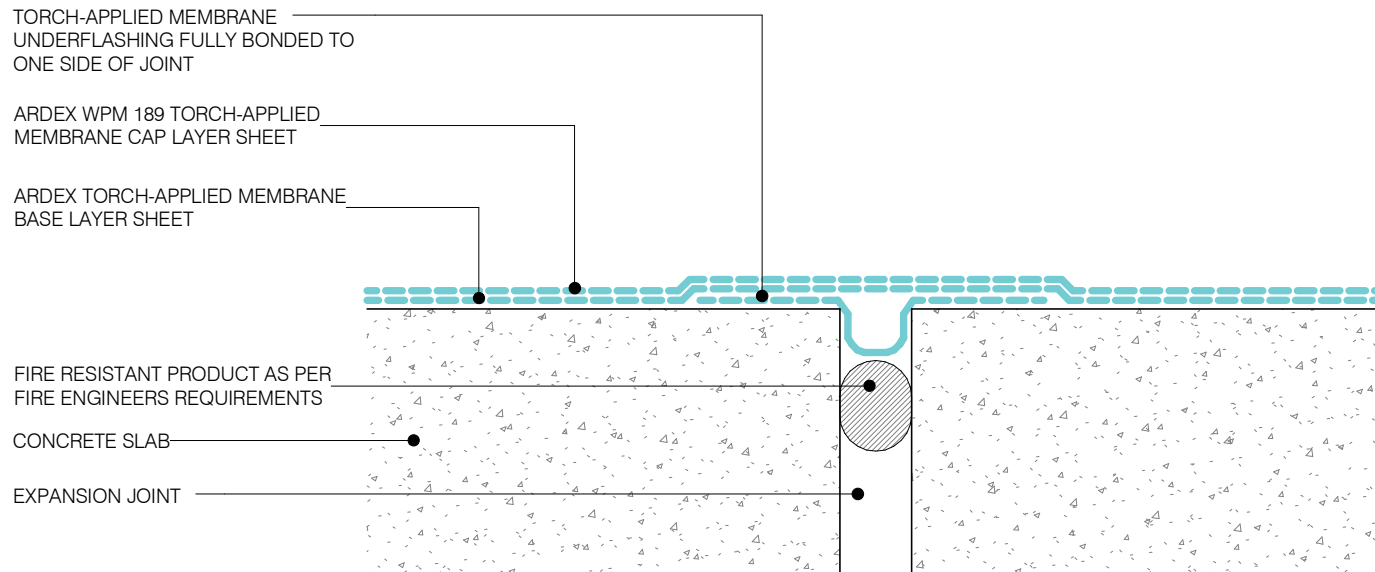
DWG NO. **AT-19**

DATE 05/04/2019

SCALE 1 : 2 @ A4



Disclaimer: Ardex makes every reasonable effort to ensure that the technical details, recommendations and other information contained in this drawing are accurate and represent our knowledge and experience at the time of design and publication. Ardex reserves the right to change the information without prior notice. Ardex provides the information in good faith with no representations or warranties (whether implied or otherwise), and will not be liable for any losses or damages, whether direct, indirect or consequential whatsoever, whether in contract, negligence or any other action, arising out of or in connection with the use, or inability to use, the information. It is your responsibility to ensure that our products are used only for the purposes for which they are intended and are used in accordance with any applicable specifications, guidelines, standards, codes of practice, regulations and laws. The supply of our products and services are also subject to certain terms, warranties and exclusions which are available on request.



ARDEX TORCH-APPLIED MEMBRANES

SEISMIC JOINT

SHEET TITLE

DWG NO.

AT-20

DATE

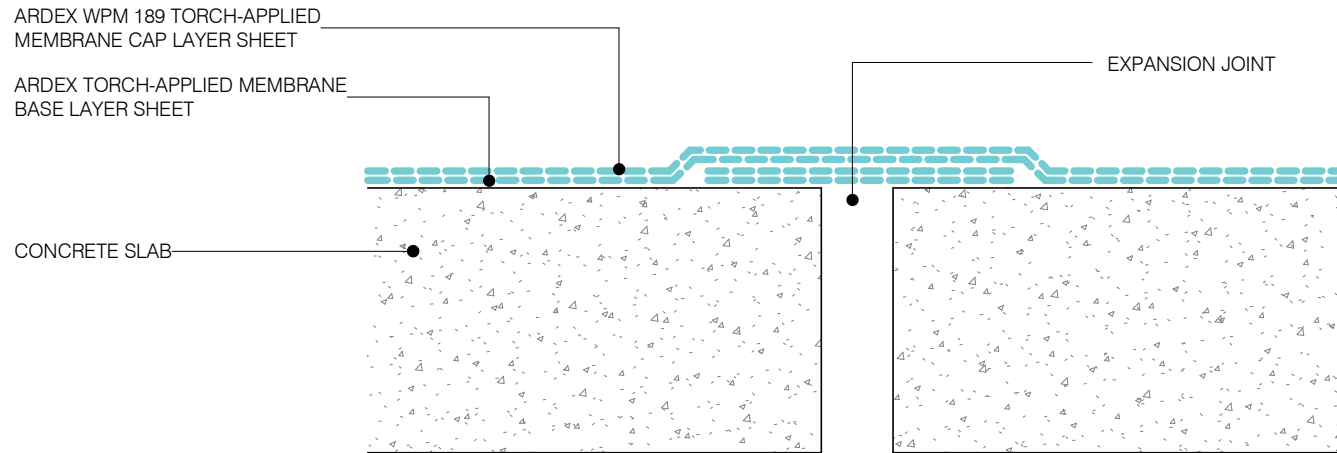
05/04/2019

SCALE

1 : 2 @ A4



Disclaimer: Ardex makes every reasonable effort to ensure that the technical details, recommendations and other information contained in this drawing are accurate and represent our knowledge and experience at the time of design and publication. Ardex reserves the right to change the information without prior notice. Ardex provides the information in good faith with no representations or warranties (whether implied or otherwise), and will not be liable for any losses or damages, whether direct, indirect or consequential whatsoever, whether in contract, negligence or any other action, arising out of or in connection with the use, or inability to use, the information. It is your responsibility to ensure that our products are used only for the purposes for which they are intended and are used in accordance with any applicable specifications, guidelines, standards, codes of practice, regulations and laws. The supply of our products and services are also subject to certain terms, warranties and exclusions which are available on request.



ARDEX TORCH-APPLIED MEMBRANES

CONSTRUCTION JOINT

SHEET TITLE

DWG NO.

AT-21

DATE

05/04/2019

SCALE

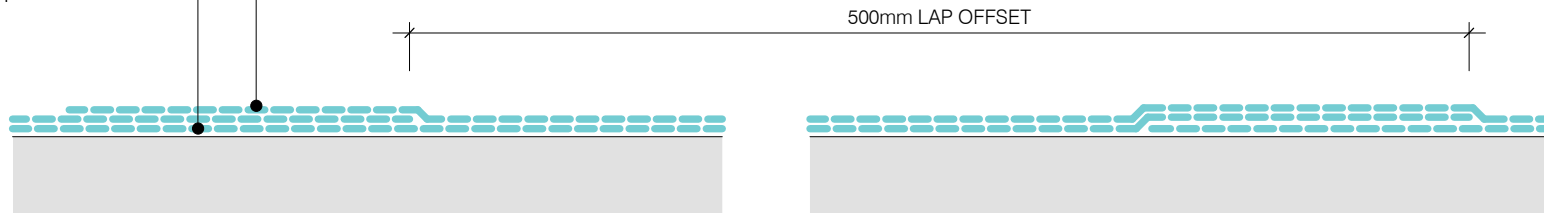
1 : 2 @ A4



Disclaimer: Ardex makes every reasonable effort to ensure that the technical details, recommendations and other information contained in this drawing are accurate and represent our knowledge and experience at the time of design and publication. Ardex reserves the right to change the information without prior notice. Ardex provides the information in good faith with no representations or warranties (whether implied or otherwise), and will not be liable for any losses or damages, whether direct, indirect or consequential whatsoever, whether in contract, negligence or any other action, arising out of or in connection with the use, or inability to use, the information. It is your responsibility to ensure that our products are used only for the purposes for which they are intended and are used in accordance with any applicable specifications, guidelines, standards, codes of practice, regulations and laws. The supply of our products and services are also subject to certain terms, warranties and exclusions which are available on request.

ARDEX WPM 189 TORCH-APPLIED
MEMBRANE CAP LAYER SHEET

ARDEX TORCH-APPLIED MEMBRANE
BASE LAYER SHEET



ARDEX TORCH-APPLIED MEMBRANES

TYPICAL MEMBRANE LAP & LAYERS

SHEET TITLE

DWG NO. **AT-22**

DATE 05/04/2019

SCALE 1 : 2 @ A4



Disclaimer: Ardex makes every reasonable effort to ensure that the technical details, recommendations and other information contained in this drawing are accurate and represent our knowledge and experience at the time of design and publication. Ardex reserves the right to change the information without prior notice. Ardex provides the information in good faith with no representations or warranties (whether implied or otherwise), and will not be liable for any losses or damages, whether direct, indirect or consequential whatsoever, whether in contract, negligence or any other action, arising out of or in connection with the use, or inability to use, the information. It is your responsibility to ensure that our products are used only for the purposes for which they are intended and are used in accordance with any applicable specifications, guidelines, standards, codes of practice, regulations and laws. The supply of our products and services are also subject to certain terms, warranties and exclusions which are available on request.

ARDEX SS CLAMPED LEAF GUARD

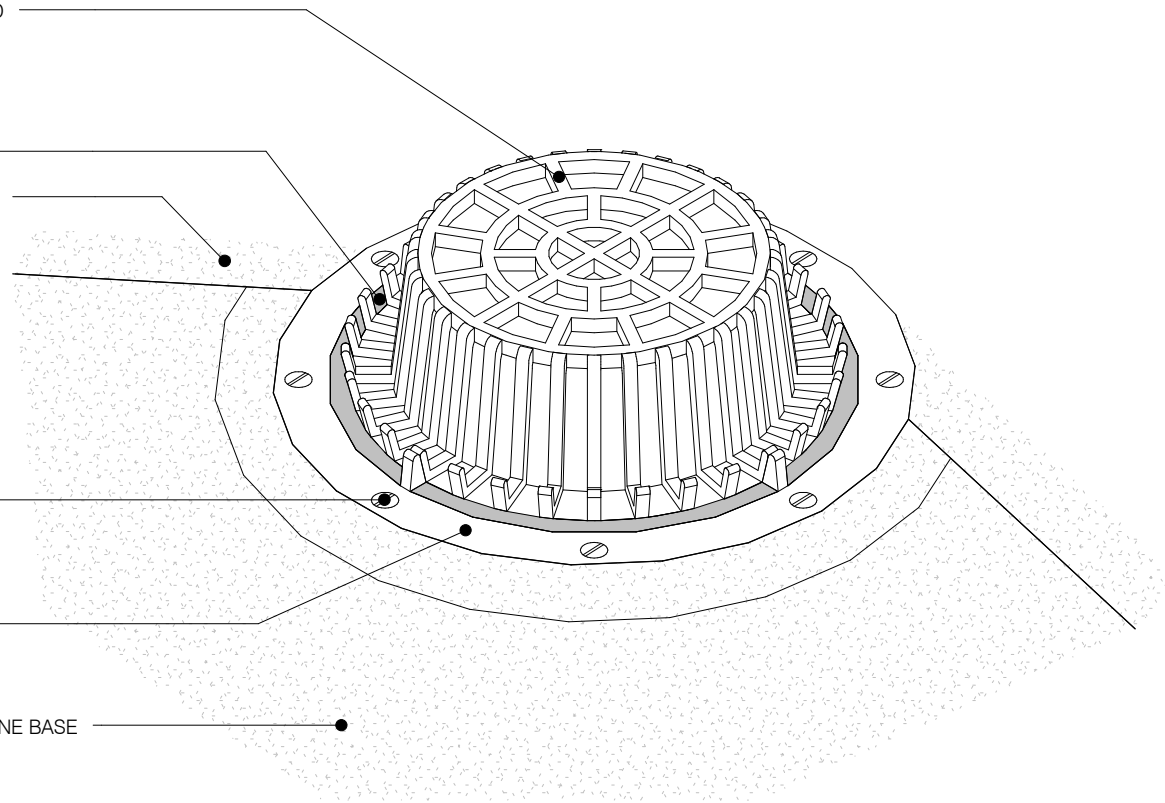
INNER CLAMP RING

ARDEX WPM 189 TORCH-APPLIED
MEMBRANE CAP LAYER SHEET

SCREWS

BASE CONE FLANGE LINE OF
SEAM TOP TO BE INSTALLED

ARDEX TORCH-APPLIED MEMBRANE BASE
LAYER SHEET



ARDEX TORCH-APPLIED MEMBRANES

3D - INTERNAL ROOF DRAIN

SHEET TITLE

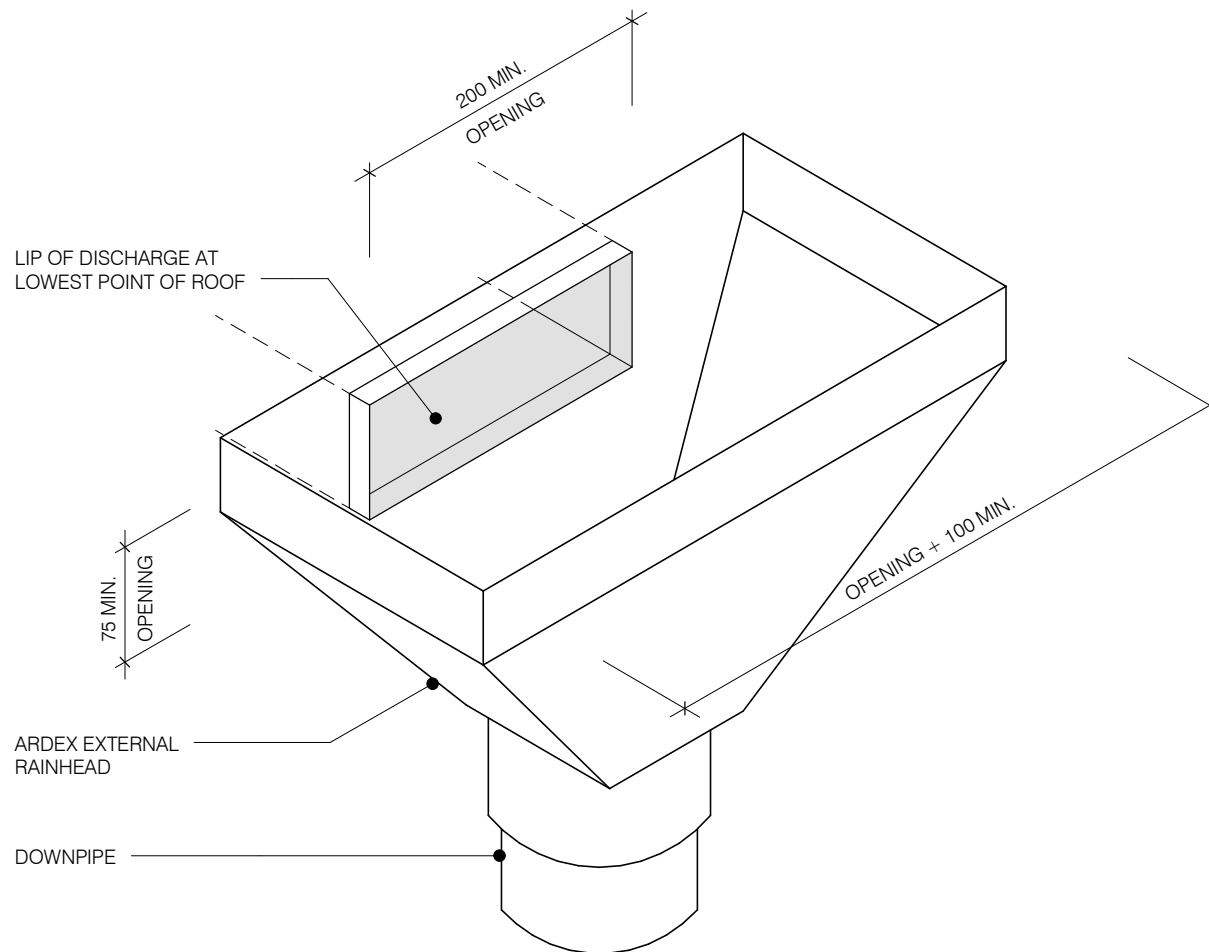
DWG NO. **AT-23**

DATE 05/04/2019

SCALE 1 : 2 @ A4



Disclaimer: Ardex makes every reasonable effort to ensure that the technical details, recommendations and other information contained in this drawing are accurate and represent our knowledge and experience at the time of design and publication. Ardex reserves the right to change the information without prior notice. Ardex provides the information in good faith with no representations or warranties (whether implied or otherwise), and will not be liable for any losses or damages, whether direct, indirect or consequential whatsoever, whether in contract, negligence or any other action, arising out of or in connection with the use, or inability to use, the information. It is your responsibility to ensure that our products are used only for the purposes for which they are intended and are used in accordance with any applicable specifications, guidelines, standards, codes of practice, regulations and laws. The supply of our products and services are also subject to certain terms, warranties and exclusions which are available on request.



ARDEX TORCH-APPLIED MEMBRANES

3D - RAINWATER HEAD & SCUPPER OPENING IN MEMBRANE

SHEET TITLE

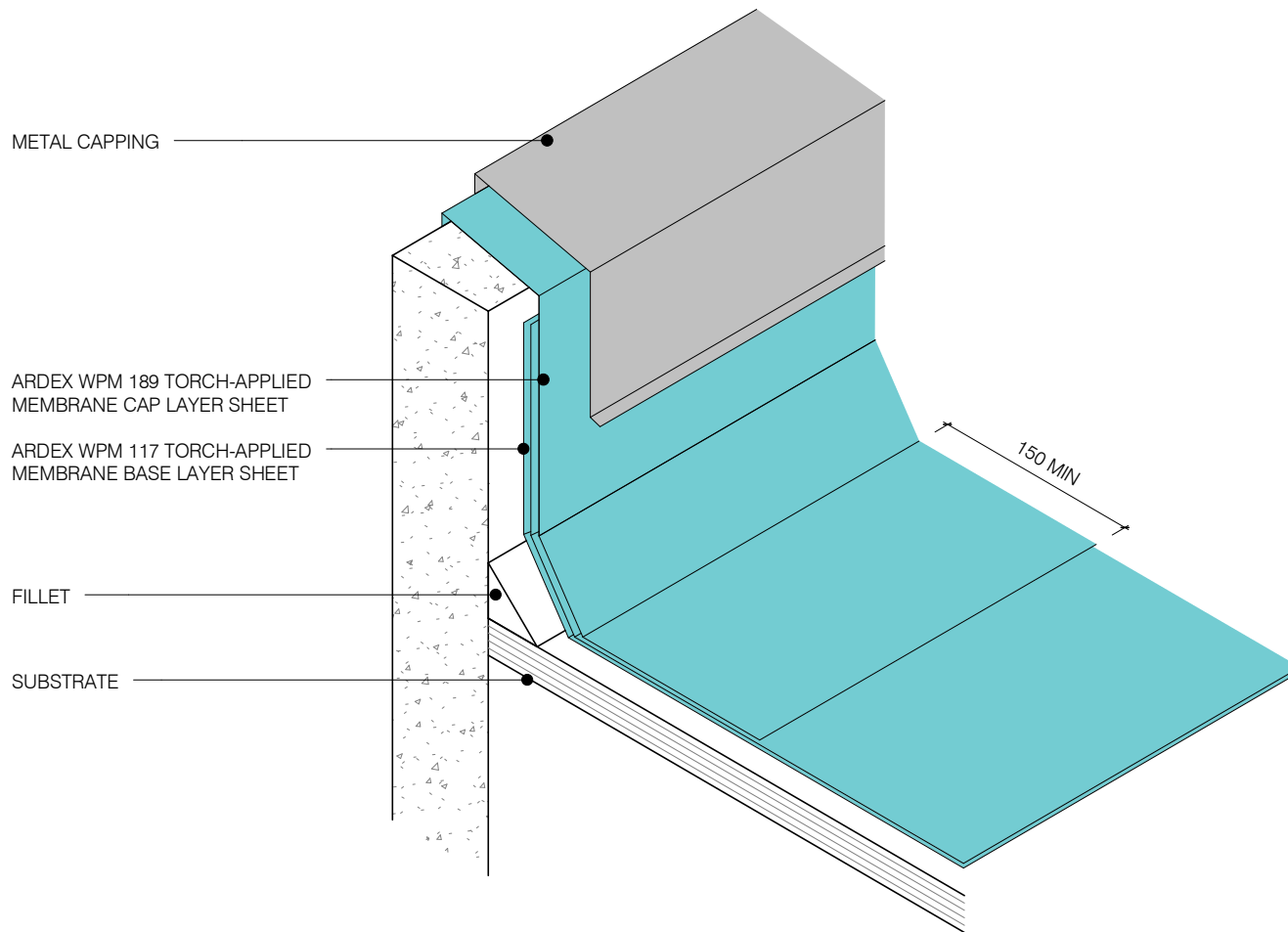
DWG NO. **AT-24**

DATE 05/04/2019

SCALE 1 : 2 @ A4



Disclaimer: Ardex makes every reasonable effort to ensure that the technical details, recommendations and other information contained in this drawing are accurate and represent our knowledge and experience at the time of design and publication. Ardex reserves the right to change the information without prior notice. Ardex provides the information in good faith with no representations or warranties (whether implied or otherwise), and will not be liable for any losses or damages, whether direct, indirect or consequential whatsoever, whether in contract, negligence or any other action, arising out of or in connection with the use, or inability to use, the information. It is your responsibility to ensure that our products are used only for the purposes for which they are intended and are used in accordance with any applicable specifications, guidelines, standards, codes of practice, regulations and laws. The supply of our products and services are also subject to certain terms, warranties and exclusions which are available on request.



ARDEX TORCH-APPLIED MEMBRANES

3D - ROOF EDGE MECHANICAL FIXED

SHEET TITLE

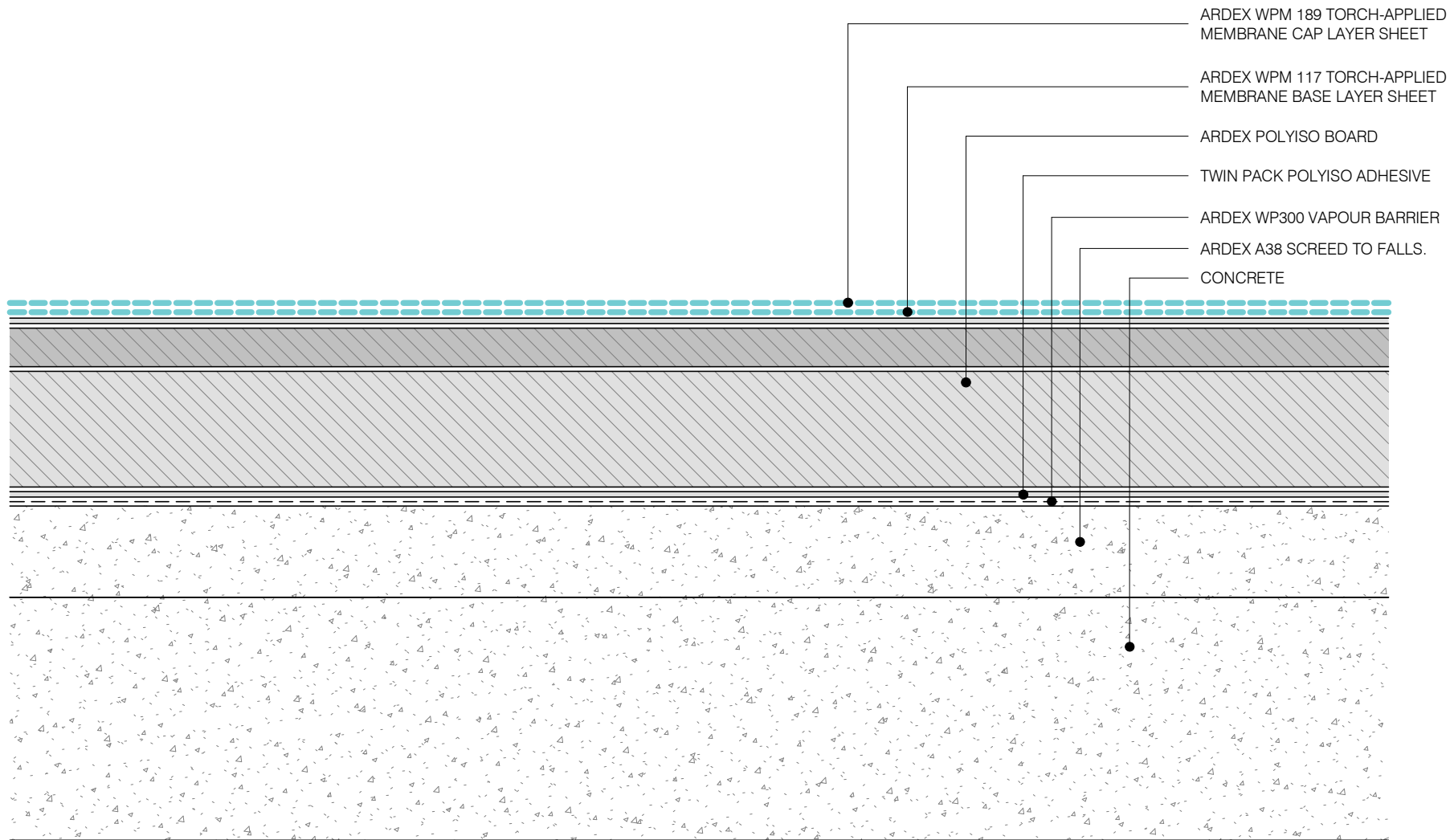
DWG NO. **AT-25**

DATE 05/04/2019

SCALE 1 : 2 @ A4



Disclaimer: Ardex makes every reasonable effort to ensure that the technical details, recommendations and other information contained in this drawing are accurate and represent our knowledge and experience at the time of design and publication. Ardex reserves the right to change the information without prior notice. Ardex provides the information in good faith with no representations or warranties (whether implied or otherwise), and will not be liable for any losses or damages, whether direct, indirect or consequential whatsoever, whether in contract, negligence or any other action, arising out of or in connection with the use, or inability to use, the information. It is your responsibility to ensure that our products are used only for the purposes for which they are intended and are used in accordance with any applicable specifications, guidelines, standards, codes of practice, regulations and laws. The supply of our products and services are also subject to certain terms, warranties and exclusions which are available on request.



ARDEX WPM 189 TORCH-APPLIED
MEMBRANE CAP LAYER SHEET

ARDEX WPM 117 TORCH-APPLIED
MEMBRANE BASE LAYER SHEET

ARDEX POLYISO BOARD

TWIN PACK POLYISO ADHESIVE

ARDEX WP300 VAPOUR BARRIER

ARDEX A38 SCREED TO FALLS.

CONCRETE

NOTE: FOR FASTENING OR FIXING PATTERN DEPENDENT ON WIND ZONE/R VALUES.
CONSULT WITH AN ARDEX REPRESENTATIVE

ARDEX TORCH-APPLIED MEMBRANES

WARM ROOF SYSTEM - CONCRETE

SHEET TITLE

DWG NO.

AT-26

DATE

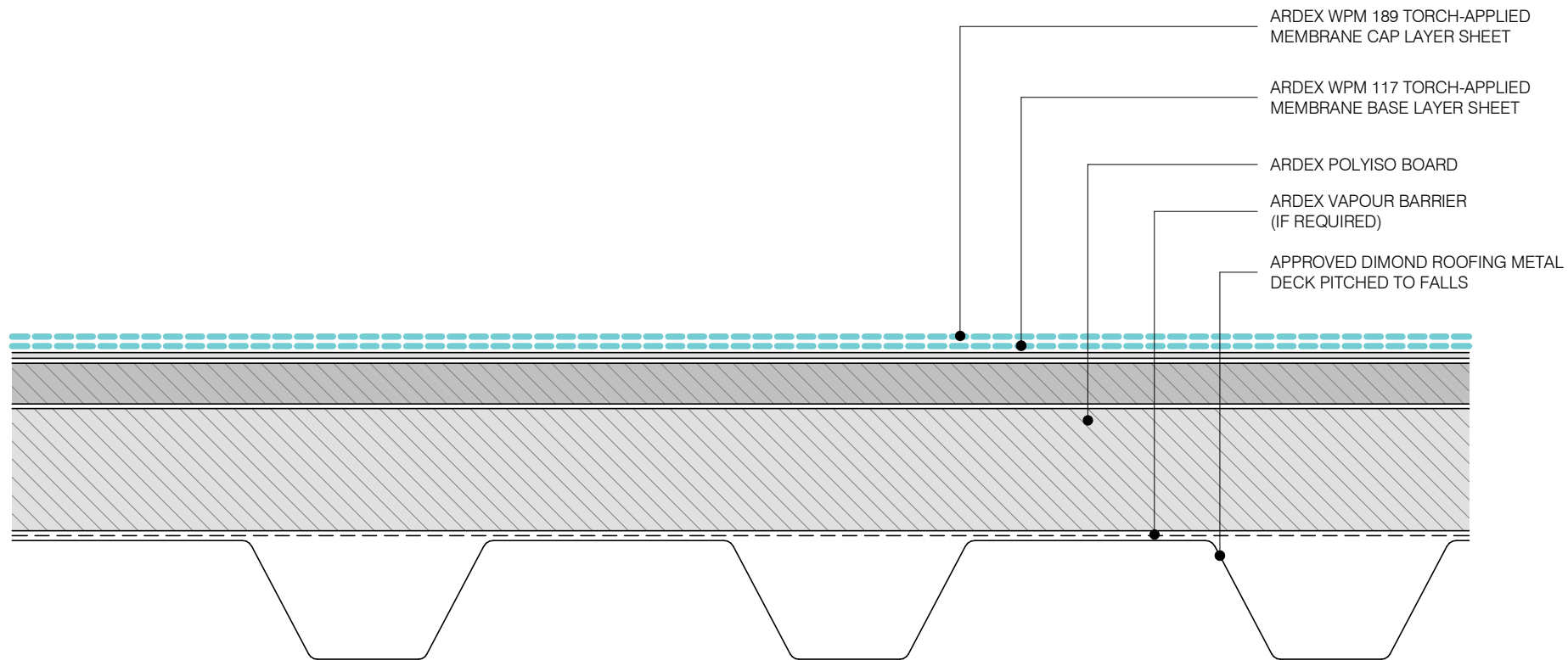
05/04/2019

SCALE

1 : 2 @ A4



Disclaimer: Ardex makes every reasonable effort to ensure that the technical details, recommendations and other information contained in this drawing are accurate and represent our knowledge and experience at the time of design and publication. Ardex reserves the right to change the information without prior notice. Ardex provides the information in good faith with no representations or warranties (whether implied or otherwise), and will not be liable for any losses or damages, whether direct, indirect or consequential whatsoever, whether in contract, negligence or any other action, arising out of or in connection with the use, or inability to use, the information. It is your responsibility to ensure that our products are used only for the purposes for which they are intended and are used in accordance with any applicable specifications, guidelines, standards, codes of practice, regulations and laws. The supply of our products and services are also subject to certain terms, warranties and exclusions which are available on request.



NOTE: FOR FASTENING OR FIXING PATTERN DEPENDENT ON WIND ZONE/R VALUES.
CONSULT WITH AN ARDEX REPRESENTATIVE

ARDEX TORCH-APPLIED MEMBRANES

Disclaimer: Ardex makes every reasonable effort to ensure that the technical details, recommendations and other information contained in this drawing are accurate and represent our knowledge and experience at the time of design and publication. Ardex reserves the right to change the information without prior notice. Ardex provides the information in good faith with no representations or warranties (whether implied or otherwise), and will not be liable for any losses or damages, whether direct, indirect or consequential whatsoever, whether in contract, negligence or any other action, arising out of or in connection with the use, or inability to use, the information. It is your responsibility to ensure that our products are used only for the purposes for which they are intended and are used in accordance with any applicable specifications, guidelines, standards, codes of practice, regulations and laws. The supply of our products and services are also subject to certain terms, warranties and exclusions which are available on request.

WARM ROOF SYSTEM - METAL DECK

SHEET TITLE

DWG NO.

AT-27

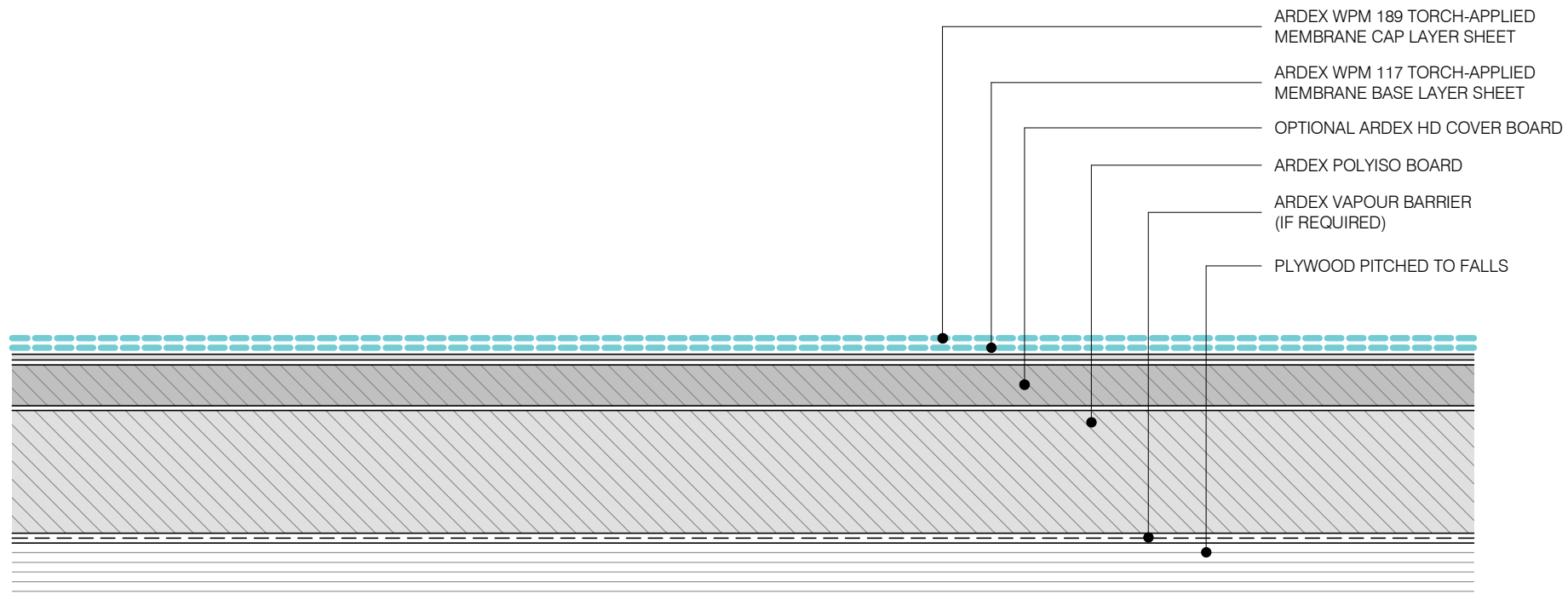
DATE

05/04/2019

SCALE

1 : 2 @ A4





NOTE: FOR FASTENING OR FIXING PATTERN DEPENDENT ON WIND ZONE/R VALUES.
CONSULT WITH AN ARDEX REPRESENTATIVE

ARDEX TORCH-APPLIED MEMBRANES

Disclaimer: Ardex makes every reasonable effort to ensure that the technical details, recommendations and other information contained in this drawing are accurate and represent our knowledge and experience at the time of design and publication. Ardex reserves the right to change the information without prior notice. Ardex provides the information in good faith with no representations or warranties (whether implied or otherwise), and will not be liable for any losses or damages, whether direct, indirect or consequential whatsoever, whether in contract, negligence or any other action, arising out of or in connection with the use, or inability to use, the information. It is your responsibility to ensure that our products are used only for the purposes for which they are intended and are used in accordance with any applicable specifications, guidelines, standards, codes of practice, regulations and laws. The supply of our products and services are also subject to certain terms, warranties and exclusions which are available on request.

WARM ROOF SYSTEM - PLYWOOD

SHEET TITLE

DWG NO. **AT-28**

DATE 05/04/2019

SCALE 1 : 2 @ A4

