

ARDEX WET AREA WATERPROOFING DRAWING LIST

DRAWING NO.	SHEET TITLE	DATE
AWW-00	DRAWING LIST	06.05.2019
AWW-01	TYPICAL PREFORMED SHOWER BASE WALL/FLOOR JUNCTION	06.05.2019
AWW-02	TYPICAL PREFORMED SHOWER BASE/FLOOR JUNCTION	06.05.2019
AWW-03	BATH/WALL JUNCTION - RECESSED	06.05.2019
AWW-04	BATH/WALL JUNCTION - BATTENED	06.05.2019
AWW-05	BATH WITH RIM	06.05.2019
AWW-06	BATH WITHOUT RIM	06.05.2019
AWW-07	TYPICAL DETAIL FOR RECESSED SOAP HOLDERS	06.05.2019
AWW-08	ENCLOSED SHOWER - MEMBRANE BELOW TILE BED	06.05.2019
AWW-09	UNENCLOSED SHOWER - MEMBRANE BELOW TILE BED	06.05.2019
AWW-10	UNENCLOSED SHOWER - MEMBRANE ABOVE TILE BED	06.05.2019
AWW-11	TYPICAL HOBLESS CONSTRUCTION	06.05.2019
AWW-12	BOND BREAKER - CLASS 3 MEMBRANE	06.05.2019
AWW-13	TYPICAL MEMBRANE TERMINATION AT DRAINAGE FLANGE	06.05.2019
AWW-14	WPM 750 CLAMP WASTE	06.05.2019
AWW-15	TYPICAL MEMBRANE TERMINATION AT DRAINAGE CHANNEL	06.05.2019
AWW-16	WET AREA VINYL DETAIL AT WASTE	06.05.2019
AWW-17	TILE TERMINATION AT DRAINAGE FLANGE WITH SOUNDPROOFING	06.05.2019
AWW-18	ENCLOSED SHOWER WITH HOB	06.05.2019
AWW-19	ENCLOSED SHOWER ON FLAT SUBSTRATE	06.05.2019
AWW-20	NO SHOWER PANEL	06.05.2019
AWW-21	WALL/FLOOR DETAIL	06.05.2019
AWW-22	TILED FLOOR SOUNDPROOFING WITH WATERPROFING	06.05.2019

WET AREA WATERPROOFING

DRAWING LIST

SHEET TITLE

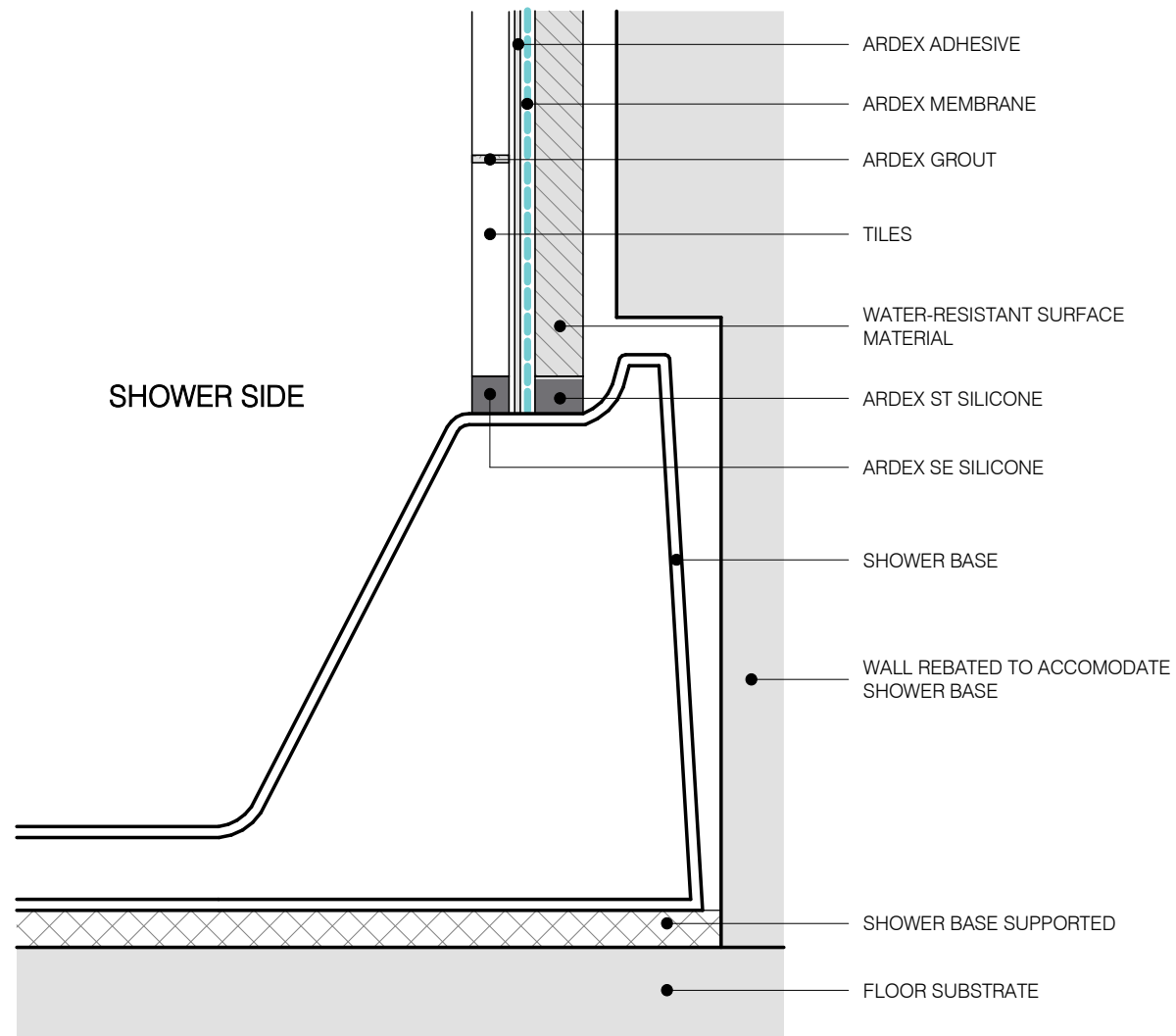
DWG NO. **AWW-00**

DATE 06.05.2019

SCALE NOT TO SCALE



Disclaimer: Ardex makes every reasonable effort to ensure that the technical details, recommendations and other information contained in this drawing are accurate and represent our knowledge and experience at the time of design and publication. Ardex reserves the right to change the information without prior notice. Ardex provides the information in good faith with no representations or warranties (whether implied or otherwise), and will not be liable for any losses or damages, whether direct, indirect or consequential whatsoever, whether in contract, negligence or any other action, arising out of or in connection with the use, or inability to use, the information. It is your responsibility to ensure that our products are used only for the purposes for which they are intended and are used in accordance with any applicable specifications, guidelines, standards, codes of practice, regulations and laws. The supply of our products and services are also subject to certain terms, warranties and exclusions which are available on request.



WET AREA WATERPROOFING

TYPICAL PREFORMED SHOWER BASE WALL/FLOOR JUNCTION

SHEET TITLE

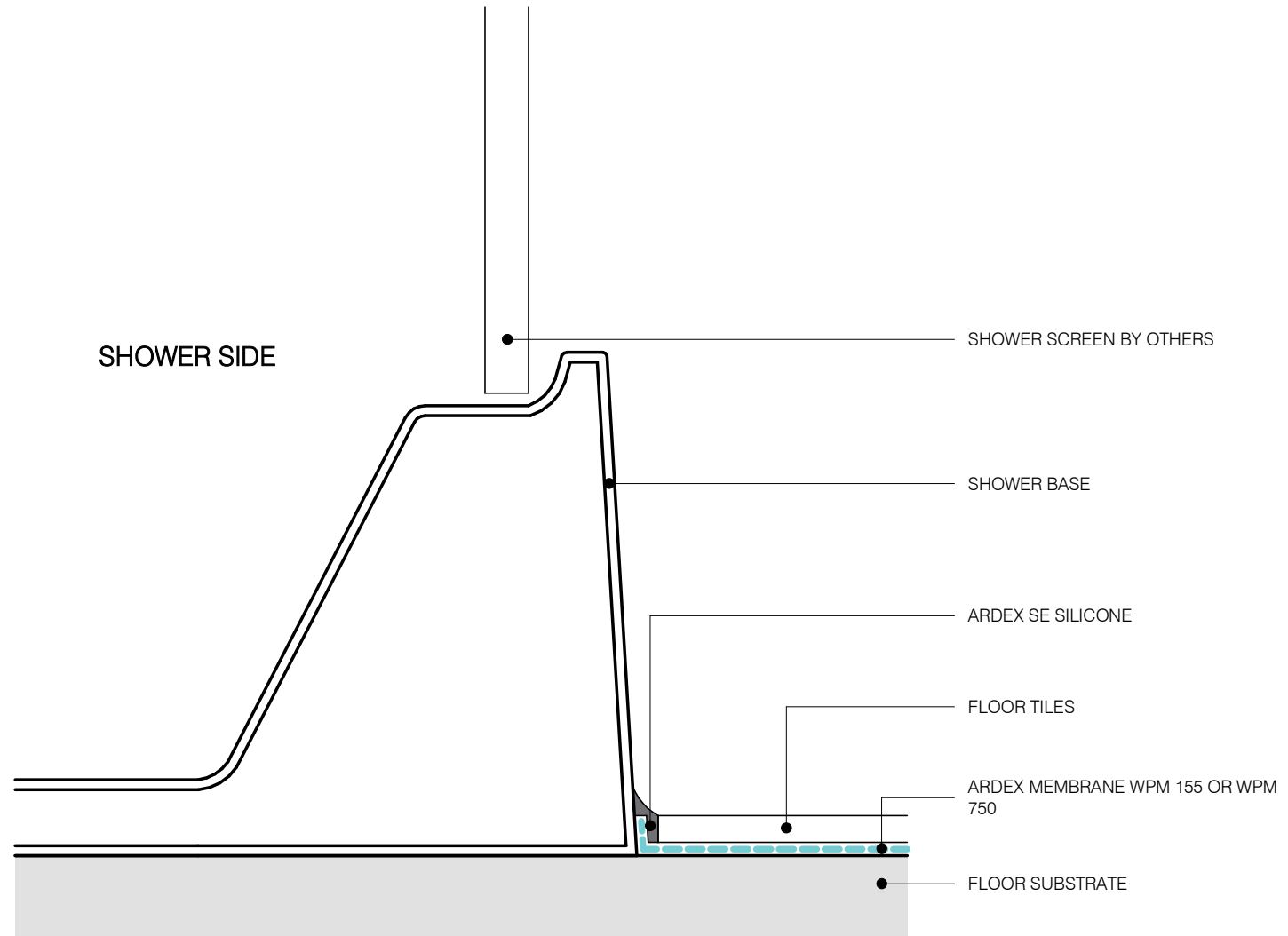
DWG NO. **AWW-01**

DATE 06.05.2019

SCALE 1 : 2 @ A4



Disclaimer: Ardex makes every reasonable effort to ensure that the technical details, recommendations and other information contained in this drawing are accurate and represent our knowledge and experience at the time of design and publication. Ardex reserves the right to change the information without prior notice. Ardex provides the information in good faith with no representations or warranties (whether implied or otherwise), and will not be liable for any losses or damages, whether direct, indirect or consequential whatsoever, whether in contract, negligence or any other action, arising out of or in connection with the use, or inability to use, the information. It is your responsibility to ensure that our products are used only for the purposes for which they are intended and are used in accordance with any applicable specifications, guidelines, standards, codes of practice, regulations and laws. The supply of our products and services are also subject to certain terms, warranties and exclusions which are available on request.



WET AREA WATERPROOFING

TYPICAL PREFORMED SHOWER BASE/FLOOR JUNCTION

SHEET TITLE

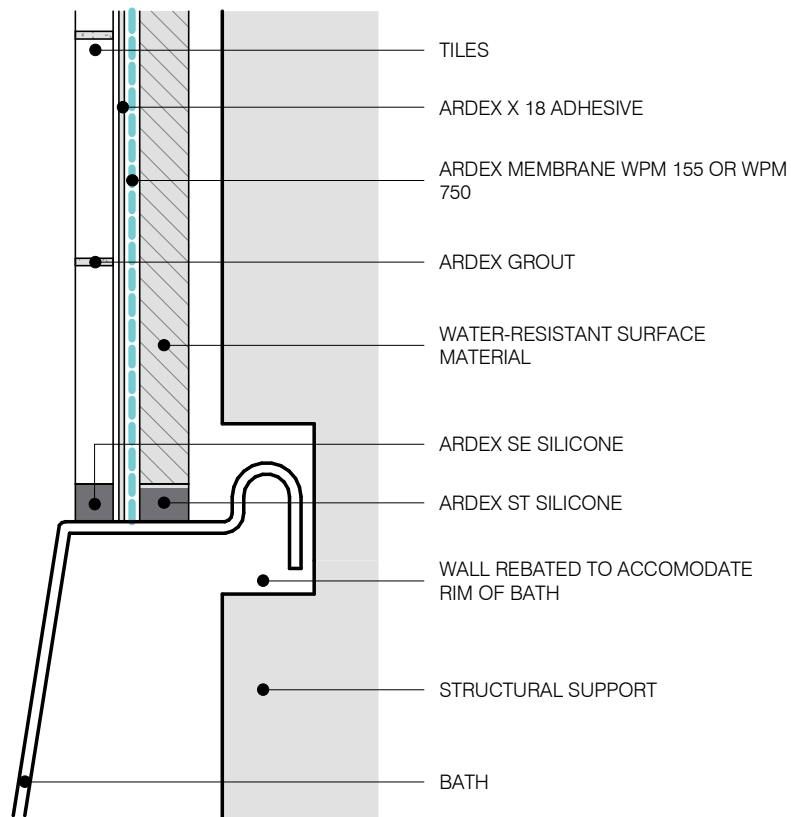
DWG NO. **AWW-02**

DATE 06.05.2019

SCALE 1 : 2 @ A4



Disclaimer: Ardex makes every reasonable effort to ensure that the technical details, recommendations and other information contained in this drawing are accurate and represent our knowledge and experience at the time of design and publication. Ardex reserves the right to change the information without prior notice. Ardex provides the information in good faith with no representations or warranties (whether implied or otherwise), and will not be liable for any losses or damages, whether direct, indirect or consequential whatsoever, whether in contract, negligence or any other action, arising out of or in connection with the use, or inability to use, the information. It is your responsibility to ensure that our products are used only for the purposes for which they are intended and are used in accordance with any applicable specifications, guidelines, standards, codes of practice, regulations and laws. The supply of our products and services are also subject to certain terms, warranties and exclusions which are available on request.



WET AREA WATERPROOFING

BATH/WALL JUNCTION - RECESSED

SHEET TITLE

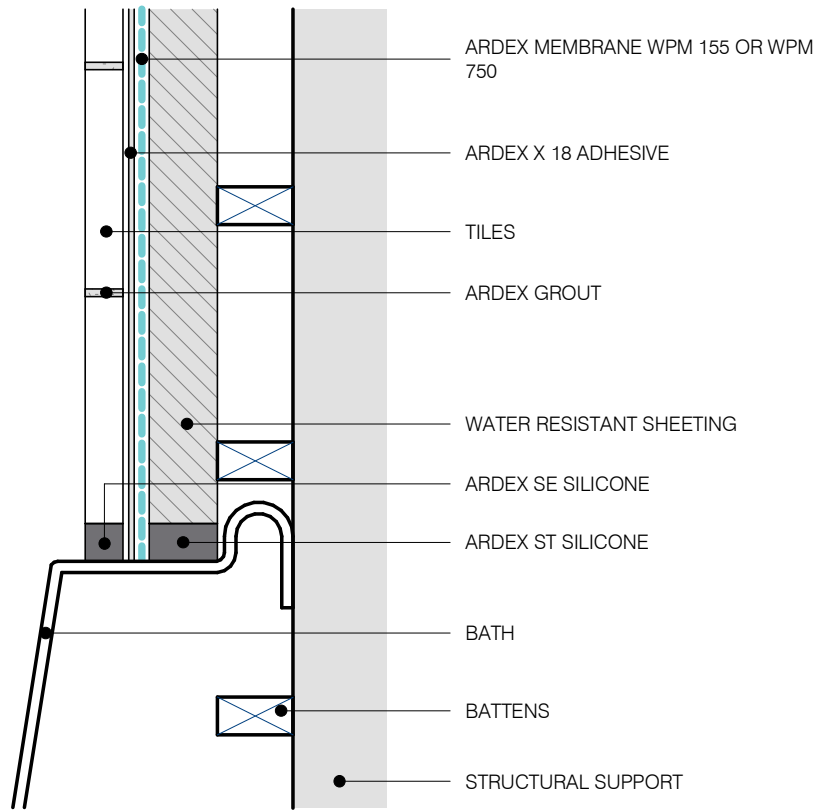
DWG NO. **AWW-03**

DATE 06.05.2019

SCALE 1 : 2 @ A4



Disclaimer: Ardex makes every reasonable effort to ensure that the technical details, recommendations and other information contained in this drawing are accurate and represent our knowledge and experience at the time of design and publication. Ardex reserves the right to change the information without prior notice. Ardex provides the information in good faith with no representations or warranties (whether implied or otherwise), and will not be liable for any losses or damages, whether direct, indirect or consequential whatsoever, whether in contract, negligence or any other action, arising out of or in connection with the use, or inability to use, the information. It is your responsibility to ensure that our products are used only for the purposes for which they are intended and are used in accordance with any applicable specifications, guidelines, standards, codes of practice, regulations and laws. The supply of our products and services are also subject to certain terms, warranties and exclusions which are available on request.



WET AREA WATERPROOFING

BATH/WALL JUNCTION - BATTENED

SHEET TITLE

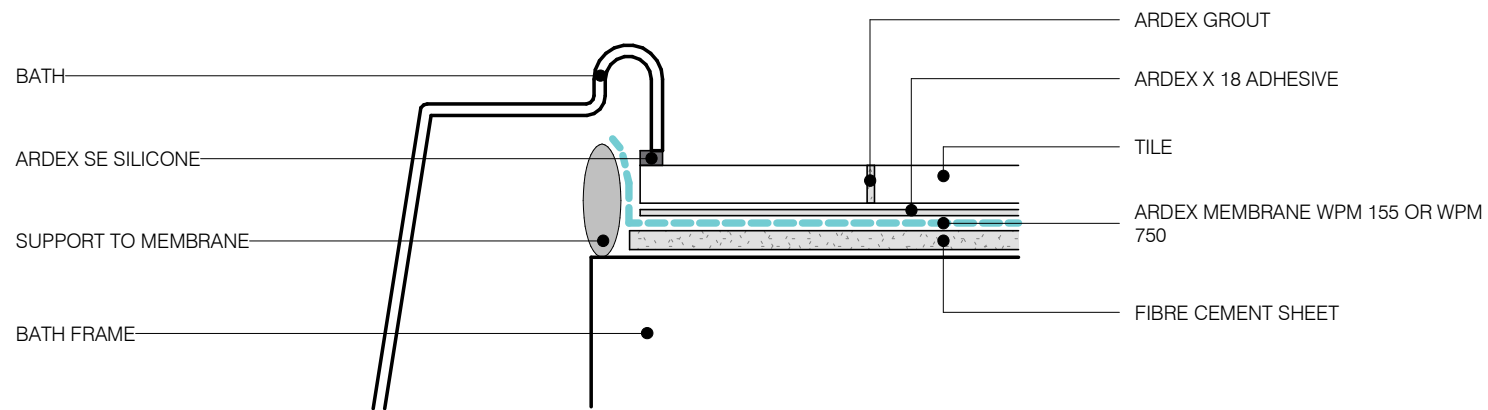
DWG NO. **AWW-04**

DATE 06.05.2019

SCALE 1 : 2 @ A4



Disclaimer: Ardex makes every reasonable effort to ensure that the technical details, recommendations and other information contained in this drawing are accurate and represent our knowledge and experience at the time of design and publication. Ardex reserves the right to change the information without prior notice. Ardex provides the information in good faith with no representations or warranties (whether implied or otherwise), and will not be liable for any losses or damages, whether direct, indirect or consequential whatsoever, whether in contract, negligence or any other action, arising out of or in connection with the use, or inability to use, the information. It is your responsibility to ensure that our products are used only for the purposes for which they are intended and are used in accordance with any applicable specifications, guidelines, standards, codes of practice, regulations and laws. The supply of our products and services are also subject to certain terms, warranties and exclusions which are available on request.



WET AREA WATERPROOFING

BATH WITH RIM
SHEET TITLE

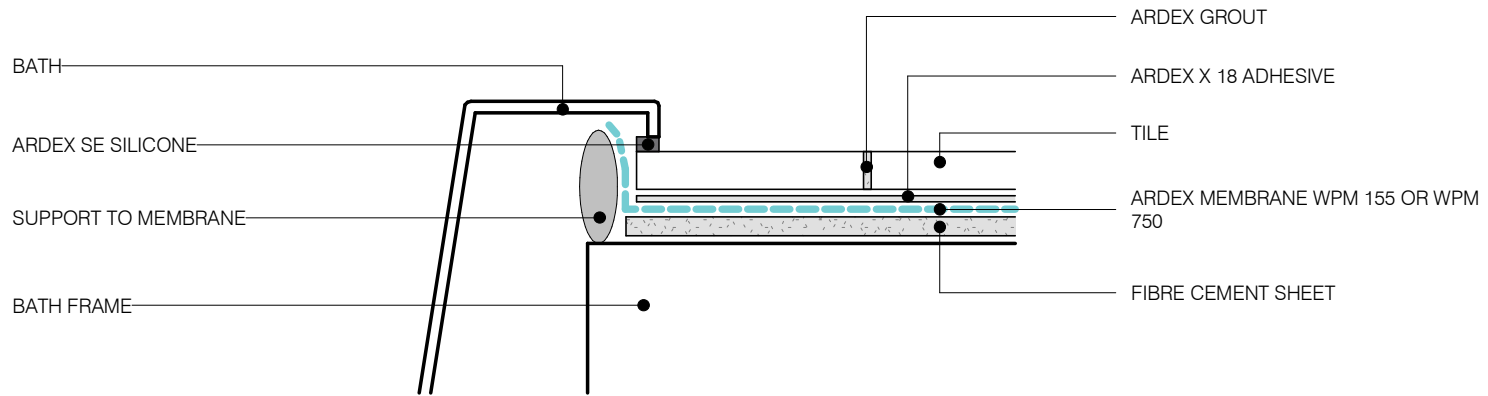
DWG NO. **AWW-05**

DATE 06.05.2019

SCALE 1 : 2 @ A4



Disclaimer: Ardex makes every reasonable effort to ensure that the technical details, recommendations and other information contained in this drawing are accurate and represent our knowledge and experience at the time of design and publication. Ardex reserves the right to change the information without prior notice. Ardex provides the information in good faith with no representations or warranties (whether implied or otherwise), and will not be liable for any losses or damages, whether direct, indirect or consequential whatsoever, whether in contract, negligence or any other action, arising out of or in connection with the use, or inability to use, the information. It is your responsibility to ensure that our products are used only for the purposes for which they are intended and are used in accordance with any applicable specifications, guidelines, standards, codes of practice, regulations and laws. The supply of our products and services are also subject to certain terms, warranties and exclusions which are available on request.



WET AREA WATERPROOFING

BATH WITHOUT RIM

SHEET TITLE

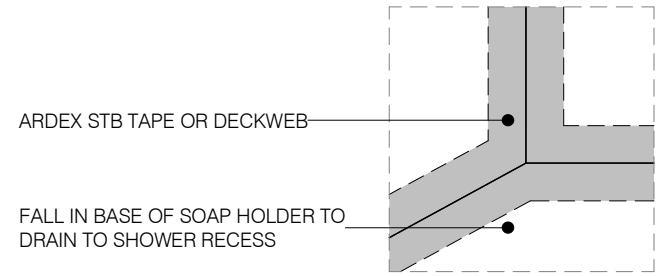
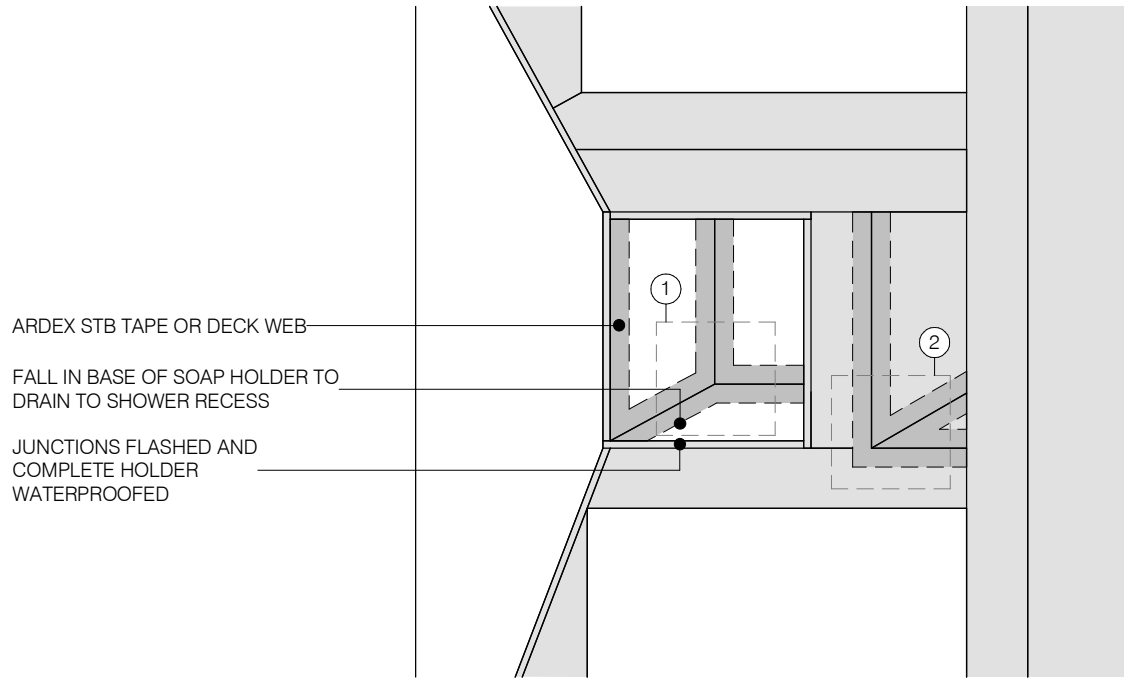
DWG. NO. **AWW-06**

DATE 06.05.2019

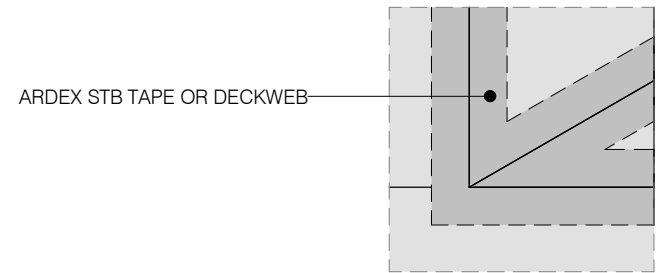
SCALE 1 : 2 @ A4



Disclaimer: Ardex makes every reasonable effort to ensure that the technical details, recommendations and other information contained in this drawing are accurate and represent our knowledge and experience at the time of design and publication. Ardex reserves the right to change the information without prior notice. Ardex provides the information in good faith with no representations or warranties (whether implied or otherwise), and will not be liable for any losses or damages, whether direct, indirect or consequential whatsoever, whether in contract, negligence or any other action, arising out of or in connection with the use, or inability to use, the information. It is your responsibility to ensure that our products are used only for the purposes for which they are intended and are used in accordance with any applicable specifications, guidelines, standards, codes of practice, regulations and laws. The supply of our products and services are also subject to certain terms, warranties and exclusions which are available on request.



CALLOUT ①



CALLOUT ②

WET AREA WATERPROOFING

TYPICAL DETAIL FOR RECESSED SOAP HOLDERS

SHEET TITLE

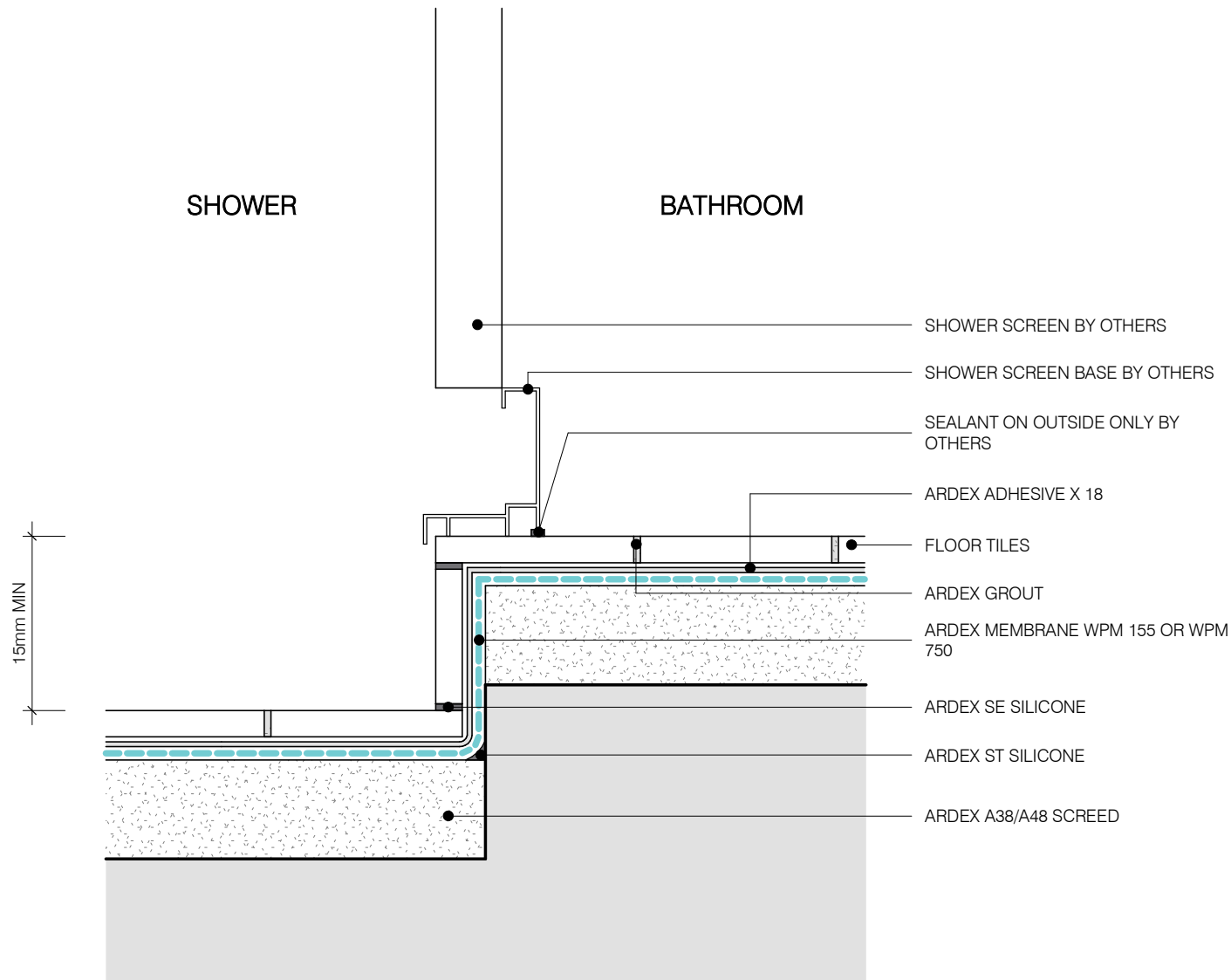
DWG NO. **AWW-07**

DATE 06.05.2019

SCALE NOT TO SCALE



Disclaimer: Ardex makes every reasonable effort to ensure that the technical details, recommendations and other information contained in this drawing are accurate and represent our knowledge and experience at the time of design and publication. Ardex reserves the right to change the information without prior notice. Ardex provides the information in good faith with no representations or warranties (whether implied or otherwise), and will not be liable for any losses or damages, whether direct, indirect or consequential whatsoever, whether in contract, negligence or any other action, arising out of or in connection with the use, or inability to use, the information. It is your responsibility to ensure that our products are used only for the purposes for which they are intended and are used in accordance with any applicable specifications, guidelines, standards, codes of practice, regulations and laws. The supply of our products and services are also subject to certain terms, warranties and exclusions which are available on request.



WET AREA WATERPROOFING

ENCLOSED SHOWER - MEMBRANE BELOW TILE BED

SHEET TITLE

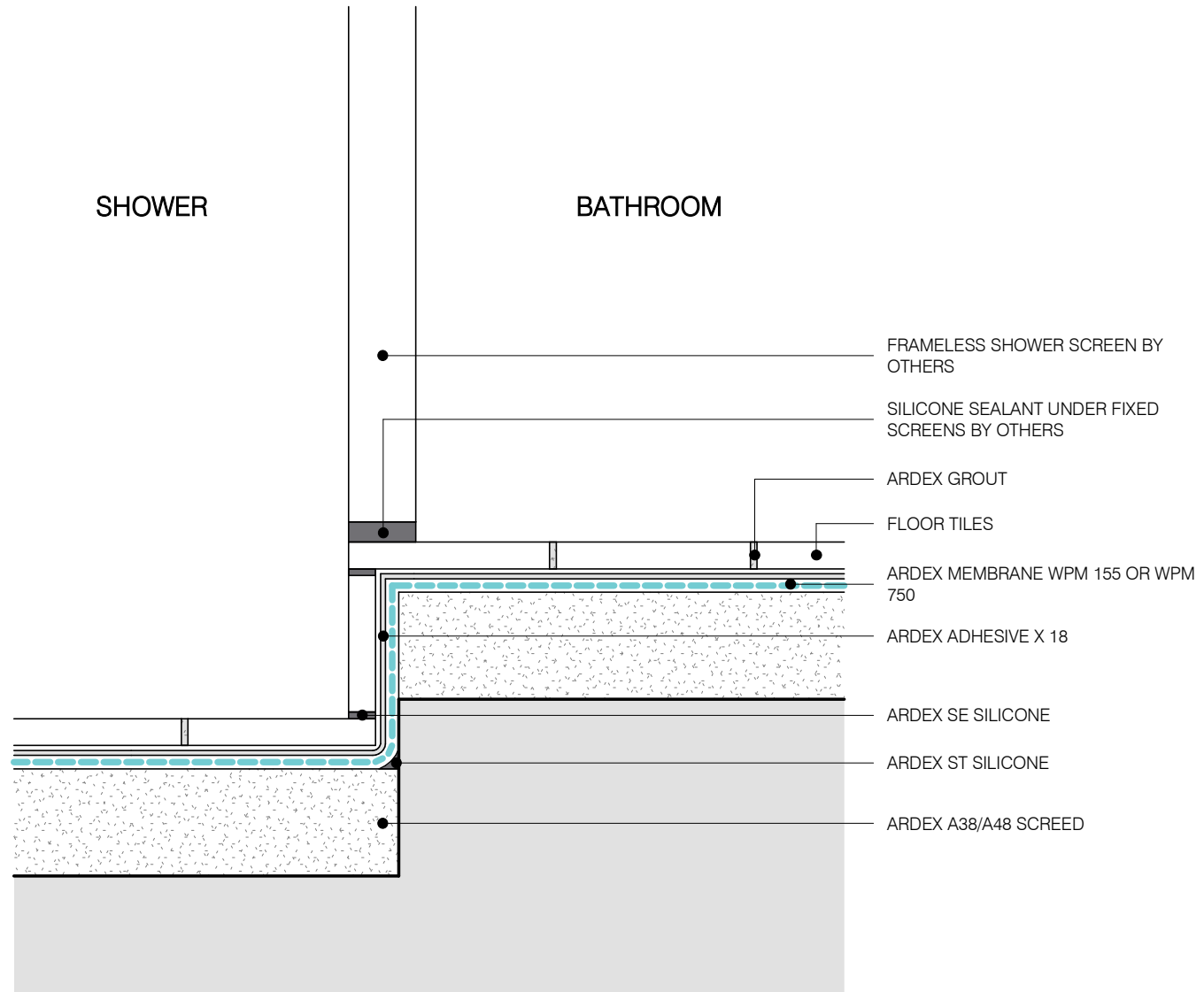
DWG NO. **AWW-08**

DATE 06.05.2019

SCALE 1 : 2 @ A4



Disclaimer: Ardex makes every reasonable effort to ensure that the technical details, recommendations and other information contained in this drawing are accurate and represent our knowledge and experience at the time of design and publication. Ardex reserves the right to change the information without prior notice. Ardex provides the information in good faith with no representations or warranties (whether implied or otherwise), and will not be liable for any losses or damages, whether direct, indirect or consequential whatsoever, whether in contract, negligence or any other action, arising out of or in connection with the use, or inability to use, the information. It is your responsibility to ensure that our products are used only for the purposes for which they are intended and are used in accordance with any applicable specifications, guidelines, standards, codes of practice, regulations and laws. The supply of our products and services are also subject to certain terms, warranties and exclusions which are available on request.



WET AREA WATERPROOFING

UNENCLOSED SHOWER - MEMBRANE BELOW TILE BED

SHEET TITLE

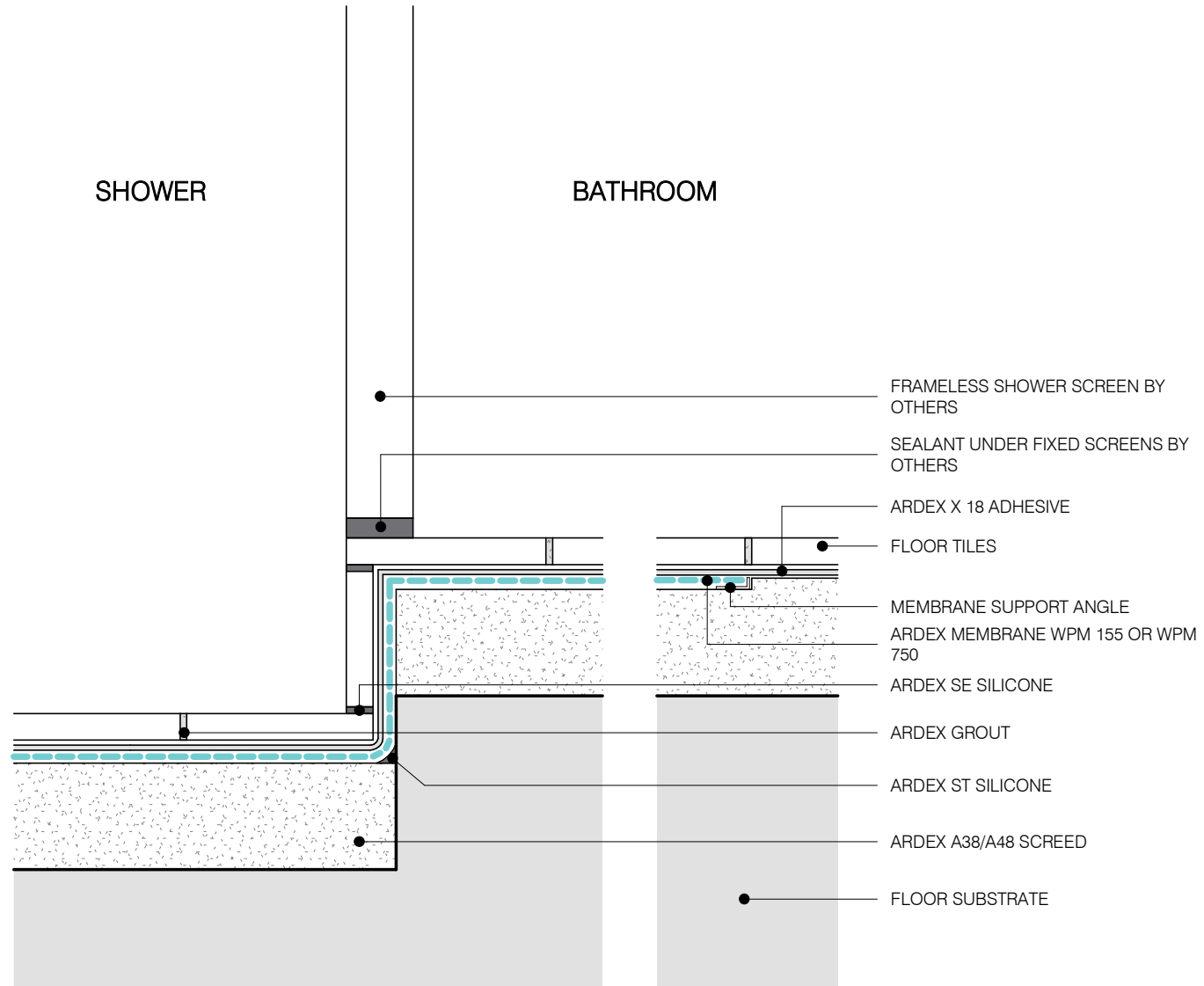
DWG NO. **AWW-09**

DATE 06.05.2019

SCALE 1 : 2 @ A4



Disclaimer: Ardex makes every reasonable effort to ensure that the technical details, recommendations and other information contained in this drawing are accurate and represent our knowledge and experience at the time of design and publication. Ardex reserves the right to change the information without prior notice. Ardex provides the information in good faith with no representations or warranties (whether implied or otherwise), and will not be liable for any losses or damages, whether direct, indirect or consequential whatsoever, whether in contract, negligence or any other action, arising out of or in connection with the use, or inability to use, the information. It is your responsibility to ensure that our products are used only for the purposes for which they are intended and are used in accordance with any applicable specifications, guidelines, standards, codes of practice, regulations and laws. The supply of our products and services are also subject to certain terms, warranties and exclusions which are available on request.



WET AREA WATERPROOFING

UNENCLOSED SHOWER - MEMBRANE ABOVE TILE BED

SHEET TITLE

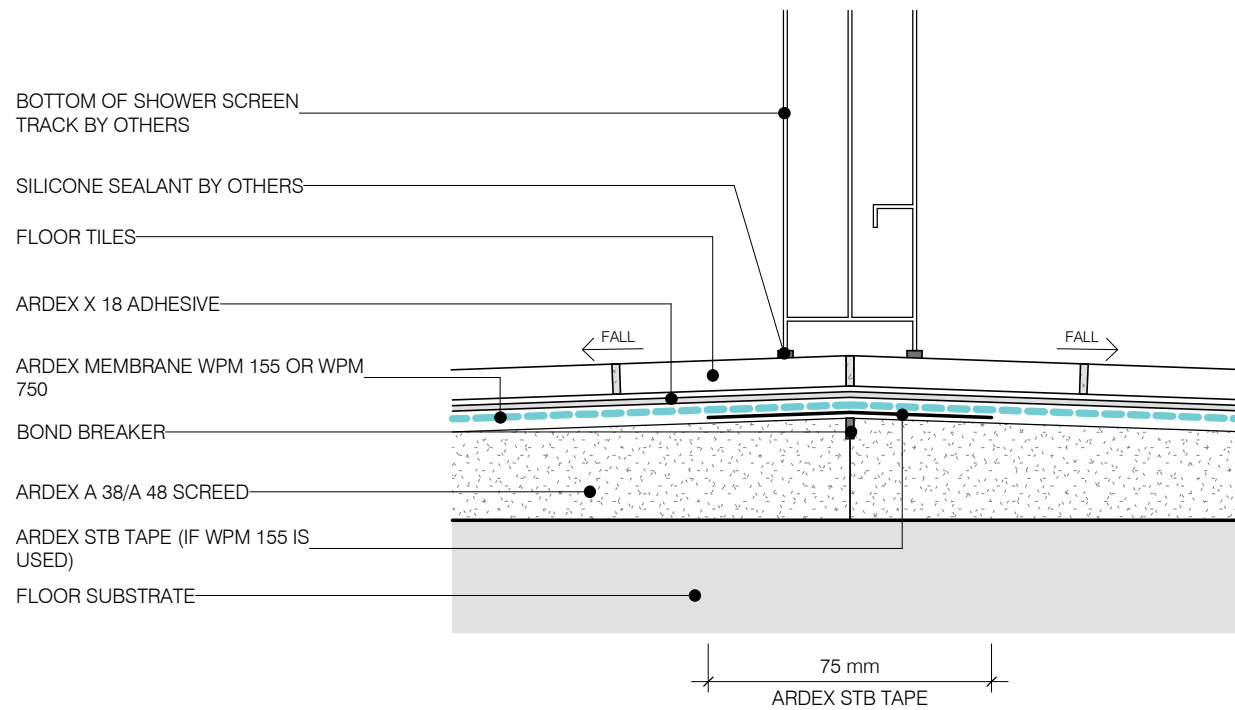
DWG NO. **AWW-10**

DATE 06.05.2019

SCALE 1 : 2 @ A4



Disclaimer: Ardex makes every reasonable effort to ensure that the technical details, recommendations and other information contained in this drawing are accurate and represent our knowledge and experience at the time of design and publication. Ardex reserves the right to change the information without prior notice. Ardex provides the information in good faith with no representations or warranties (whether implied or otherwise), and will not be liable for any losses or damages, whether direct, indirect or consequential whatsoever, whether in contract, negligence or any other action, arising out of or in connection with the use, or inability to use, the information. It is your responsibility to ensure that our products are used only for the purposes for which they are intended and are used in accordance with any applicable specifications, guidelines, standards, codes of practice, regulations and laws. The supply of our products and services are also subject to certain terms, warranties and exclusions which are available on request.



WET AREA WATERPROOFING

TYPICAL HOBLESS CONSTRUCTION

SHEET TITLE

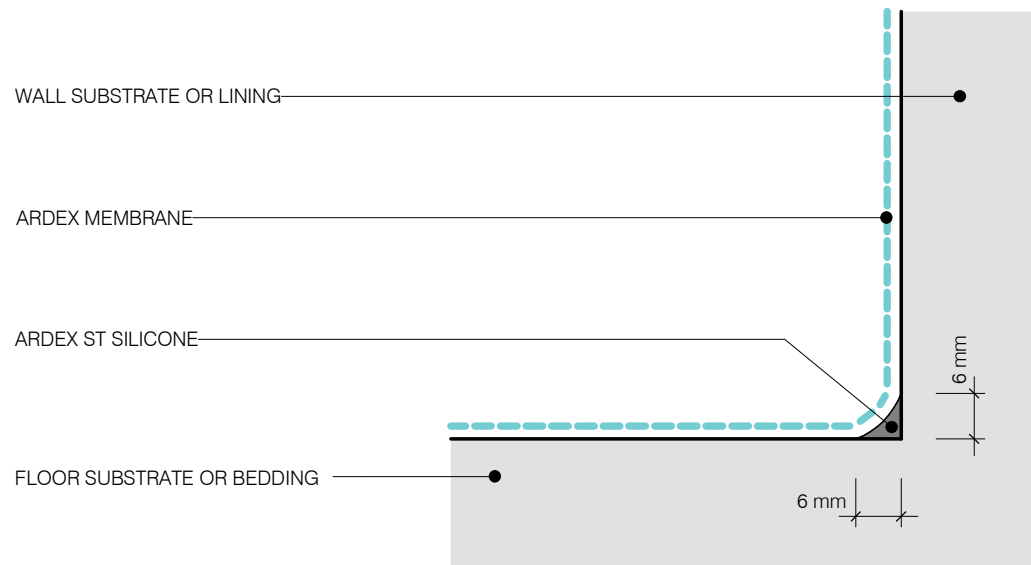
DWG NO. **AWW-11**

DATE 06.05.2019

SCALE 1 : 2 @ A4



Disclaimer: Ardex makes every reasonable effort to ensure that the technical details, recommendations and other information contained in this drawing are accurate and represent our knowledge and experience at the time of design and publication. Ardex reserves the right to change the information without prior notice. Ardex provides the information in good faith with no representations or warranties (whether implied or otherwise), and will not be liable for any losses or damages, whether direct, indirect or consequential whatsoever, whether in contract, negligence or any other action, arising out of or in connection with the use, or inability to use, the information. It is your responsibility to ensure that our products are used only for the purposes for which they are intended and are used in accordance with any applicable specifications, guidelines, standards, codes of practice, regulations and laws. The supply of our products and services are also subject to certain terms, warranties and exclusions which are available on request.



WET AREA WATERPROOFING

BOND BREAKER - CLASS 3 MEMBRANE

SHEET TITLE

DWG NO. **AWW-12**

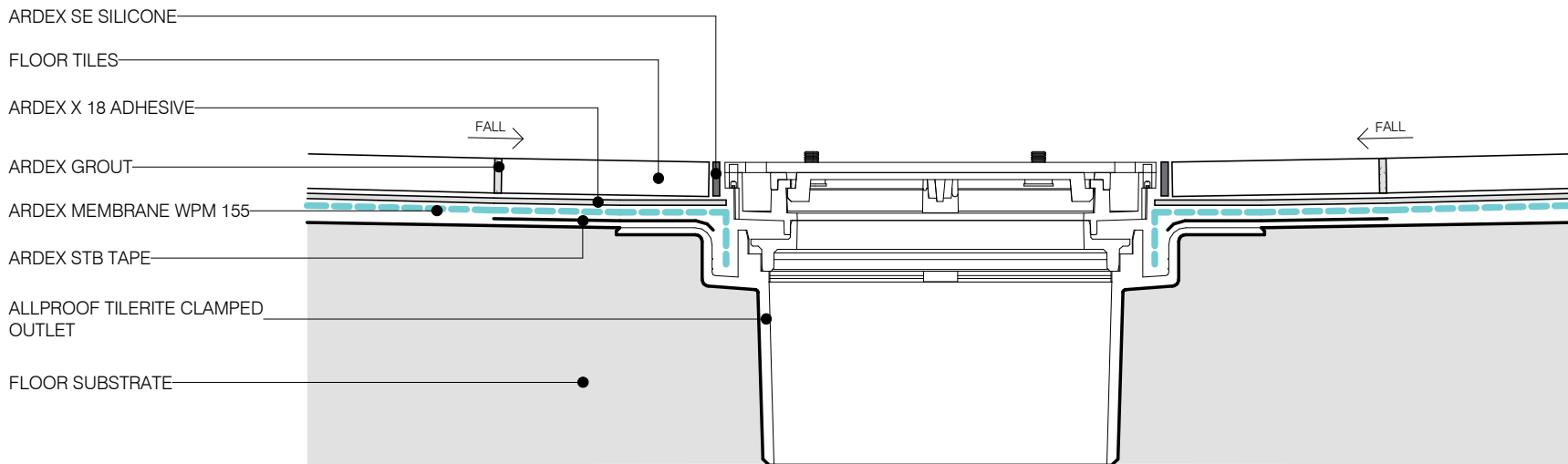
DATE 06.05.2019

SCALE 1 : 1 @ A4



Disclaimer: Ardex makes every reasonable effort to ensure that the technical details, recommendations and other information contained in this drawing are accurate and represent our knowledge and experience at the time of design and publication. Ardex reserves the right to change the information without prior notice. Ardex provides the information in good faith with no representations or warranties (whether implied or otherwise), and will not be liable for any losses or damages, whether direct, indirect or consequential whatsoever, whether in contract, negligence or any other action, arising out of or in connection with the use, or inability to use, the information. It is your responsibility to ensure that our products are used only for the purposes for which they are intended and are used in accordance with any applicable specifications, guidelines, standards, codes of practice, regulations and laws. The supply of our products and services are also subject to certain terms, warranties and exclusions which are available on request.

NOTE:
 FLANGE PREPARED USING PLUMBERS
 CEMENT



WET AREA WATERPROOFING

TYPICAL MEMBRANE TERMINATION AT DRAINAGE FLANGE

SHEET TITLE

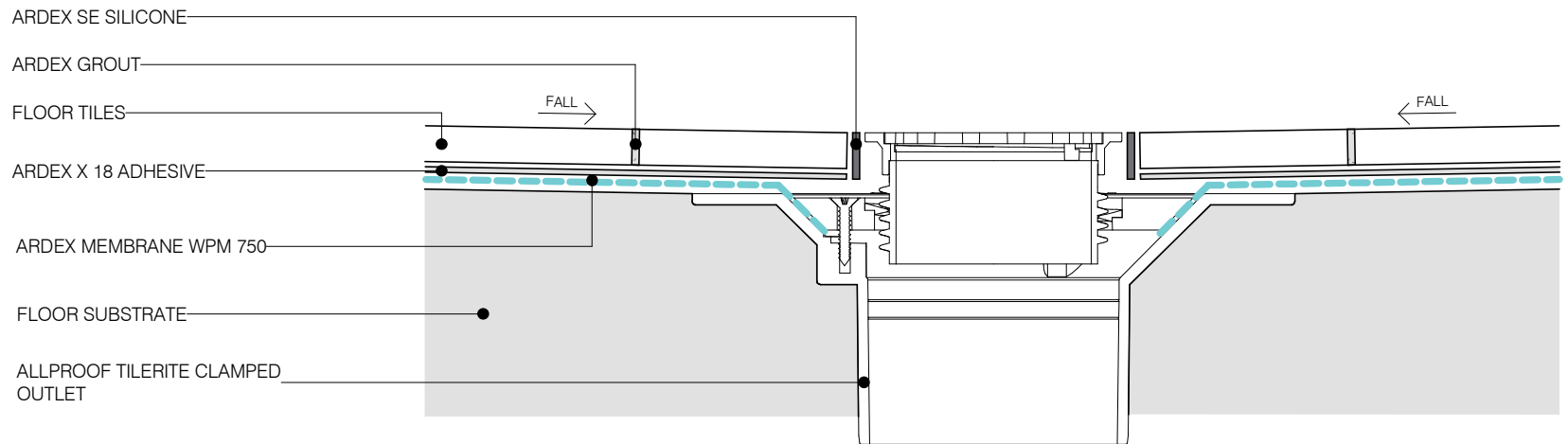
DWG NO. **AWW-13**

DATE 06.05.2019

SCALE 1 : 2 @ A4



Disclaimer: Ardex makes every reasonable effort to ensure that the technical details, recommendations and other information contained in this drawing are accurate and represent our knowledge and experience at the time of design and publication. Ardex reserves the right to change the information without prior notice. Ardex provides the information in good faith with no representations or warranties (whether implied or otherwise), and will not be liable for any losses or damages, whether direct, indirect or consequential whatsoever, whether in contract, negligence or any other action, arising out of or in connection with the use, or inability to use, the information. It is your responsibility to ensure that our products are used only for the purposes for which they are intended and are used in accordance with any applicable specifications, guidelines, standards, codes of practice, regulations and laws. The supply of our products and services are also subject to certain terms, warranties and exclusions which are available on request.



WET AREA WATERPROOFING

WPM 750 CLAMP WASTE

SHEET TITLE

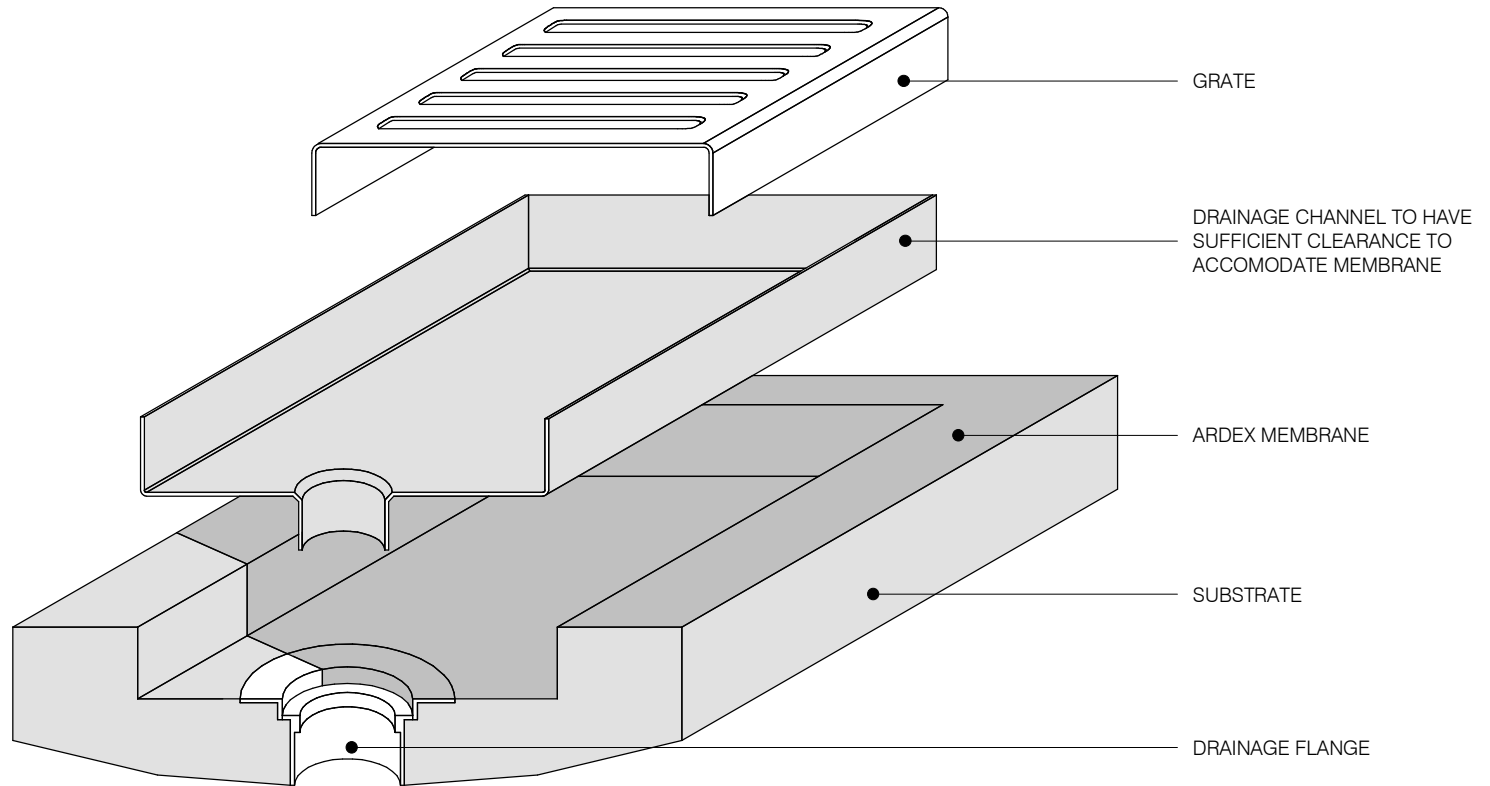
DWG NO. **AWW-14**

DATE 06.05.2019

SCALE 1 : 2 @ A4



Disclaimer: Ardex makes every reasonable effort to ensure that the technical details, recommendations and other information contained in this drawing are accurate and represent our knowledge and experience at the time of design and publication. Ardex reserves the right to change the information without prior notice. Ardex provides the information in good faith with no representations or warranties (whether implied or otherwise), and will not be liable for any losses or damages, whether direct, indirect or consequential whatsoever, whether in contract, negligence or any other action, arising out of or in connection with the use, or inability to use, the information. It is your responsibility to ensure that our products are used only for the purposes for which they are intended and are used in accordance with any applicable specifications, guidelines, standards, codes of practice, regulations and laws. The supply of our products and services are also subject to certain terms, warranties and exclusions which are available on request.



WET AREA WATERPROOFING

TYPICAL MEMBRANE TERMINATION AT DRAINAGE CHANNEL

SHEET TITLE

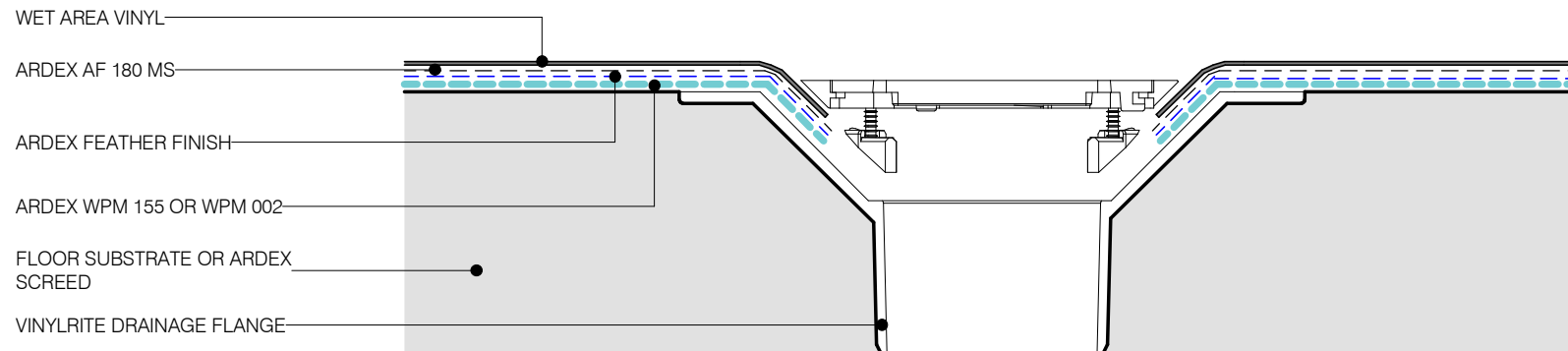
DWG NO. **AWW-15**

DATE 06.05.2019

SCALE 1 : 2 @ A4



Disclaimer: Ardex makes every reasonable effort to ensure that the technical details, recommendations and other information contained in this drawing are accurate and represent our knowledge and experience at the time of design and publication. Ardex reserves the right to change the information without prior notice. Ardex provides the information in good faith with no representations or warranties (whether implied or otherwise), and will not be liable for any losses or damages, whether direct, indirect or consequential whatsoever, whether in contract, negligence or any other action, arising out of or in connection with the use, or inability to use, the information. It is your responsibility to ensure that our products are used only for the purposes for which they are intended and are used in accordance with any applicable specifications, guidelines, standards, codes of practice, regulations and laws. The supply of our products and services are also subject to certain terms, warranties and exclusions which are available on request.



WET AREA WATERPROOFING

WET AREA VINYL DETAIL AT WASTE

SHEET TITLE

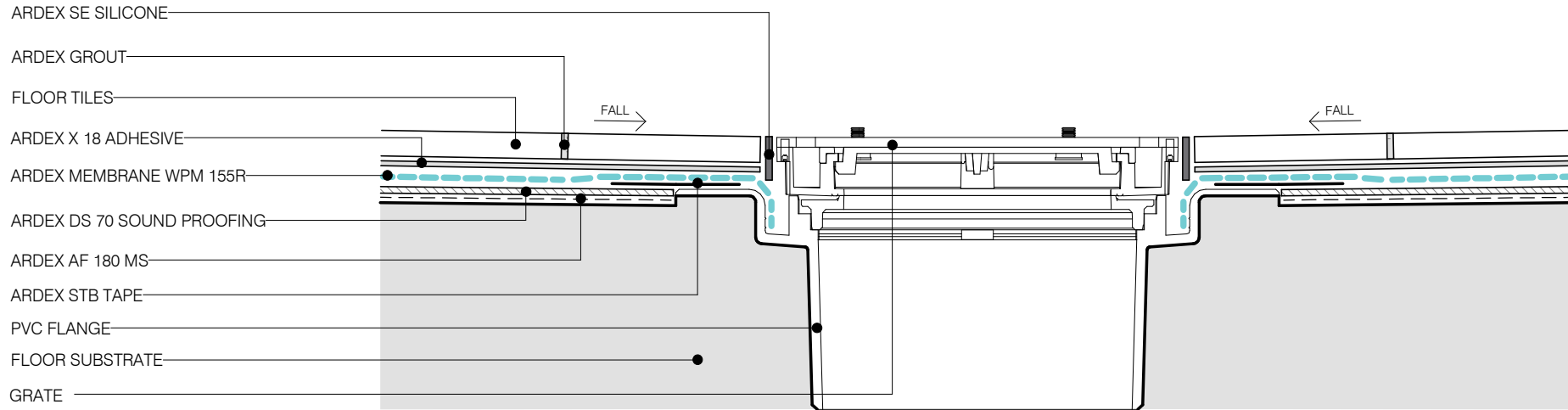
DWG NO. **AWW-16**

DATE 06.05.2019

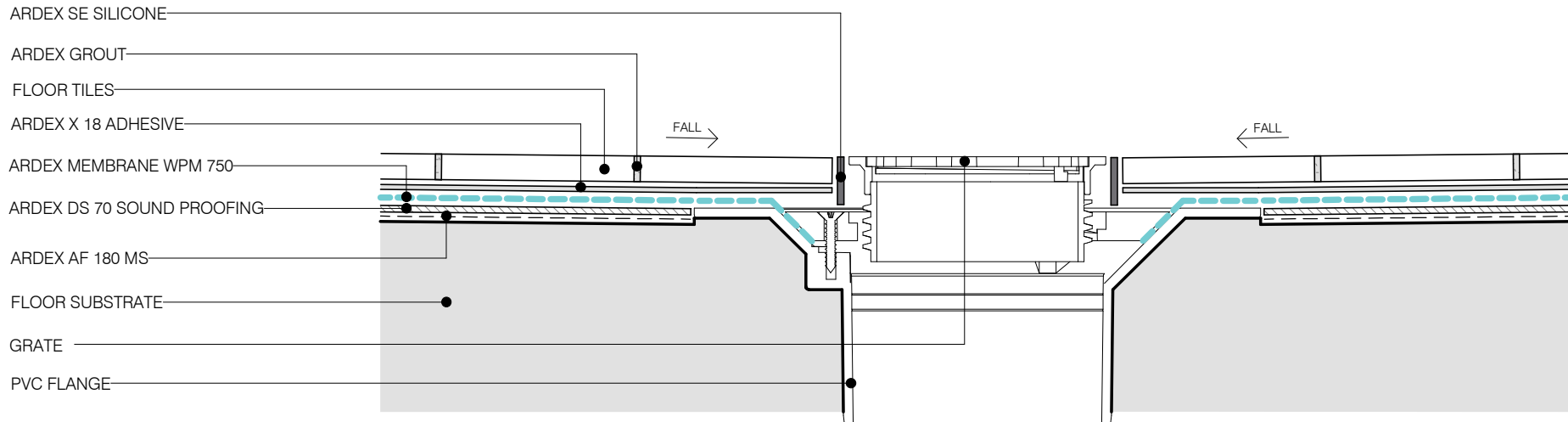
SCALE 1 : 2 @ A4



Disclaimer: Ardex makes every reasonable effort to ensure that the technical details, recommendations and other information contained in this drawing are accurate and represent our knowledge and experience at the time of design and publication. Ardex reserves the right to change the information without prior notice. Ardex provides the information in good faith with no representations or warranties (whether implied or otherwise), and will not be liable for any losses or damages, whether direct, indirect or consequential whatsoever, whether in contract, negligence or any other action, arising out of or in connection with the use, or inability to use, the information. It is your responsibility to ensure that our products are used only for the purposes for which they are intended and are used in accordance with any applicable specifications, guidelines, standards, codes of practice, regulations and laws. The supply of our products and services are also subject to certain terms, warranties and exclusions which are available on request.



OPTION 1: ARDEX MEMBRANE WPM 155R



OPTION 2: ARDEX MEMBRANE WPM 750

WET AREA WATERPROOFING

TILE TERMINATION AT DRAINAGE FLANGE WITH SOUNDPROOFING

DWG NO. **AWW-17**

DATE 06.05.2019

SCALE 1 : 2 @ A4



Disclaimer: Ardex makes every reasonable effort to ensure that the technical details, recommendations and other information contained in this drawing are accurate and represent our knowledge and experience at the time of design and publication. Ardex reserves the right to change the information without prior notice. Ardex provides the information in good faith with no representations or warranties (whether implied or otherwise), and will not be liable for any losses or damages, whether direct, indirect or consequential whatsoever, whether in contract, negligence or any other action, arising out of or in connection with the use, or inability to use, the information. It is your responsibility to ensure that our products are used only for the purposes for which they are intended and are used in accordance with any applicable specifications, guidelines, standards, codes of practice, regulations and laws. The supply of our products and services are also subject to certain terms, warranties and exclusions which are available on request.

SHOWER SIDE

SHOWER SCREEN BY OTHERS

SILICONE SEALANT BY OTHERS

ARDEX SE SILICONE

TILES

CONCRETE HOB

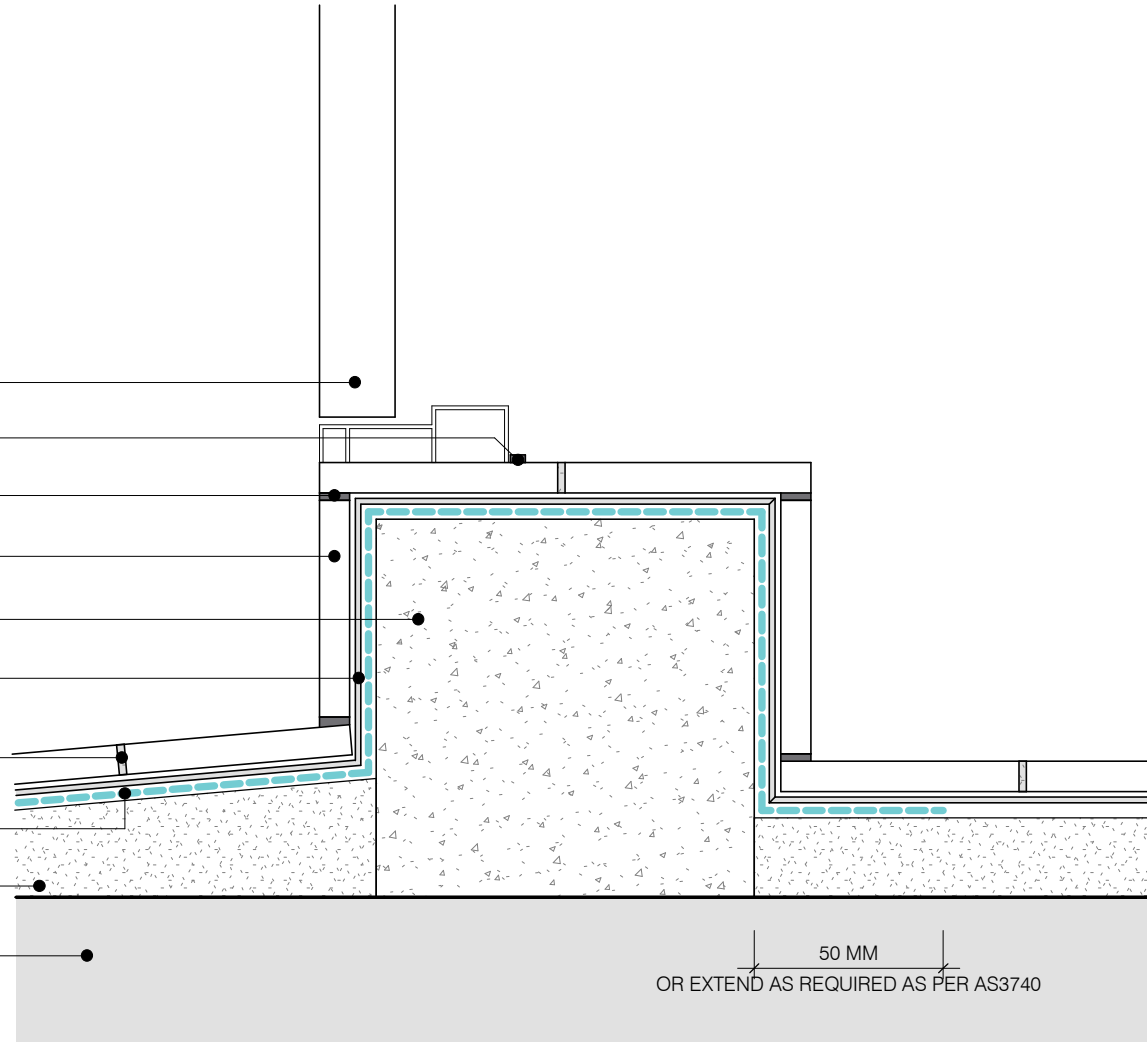
ARDEX X 18 ADHESIVE

ARDEX GROUT

ARDEX MEMBRANE WPM 155 OR WPM 750

ARDEX A 38/A 48 SCREED

FLOOR SUBSTRATE



50 MM
OR EXTEND AS REQUIRED AS PER AS3740

WET AREA WATERPROOFING

ENCLOSED SHOWER WITH HOB

SHEET TITLE

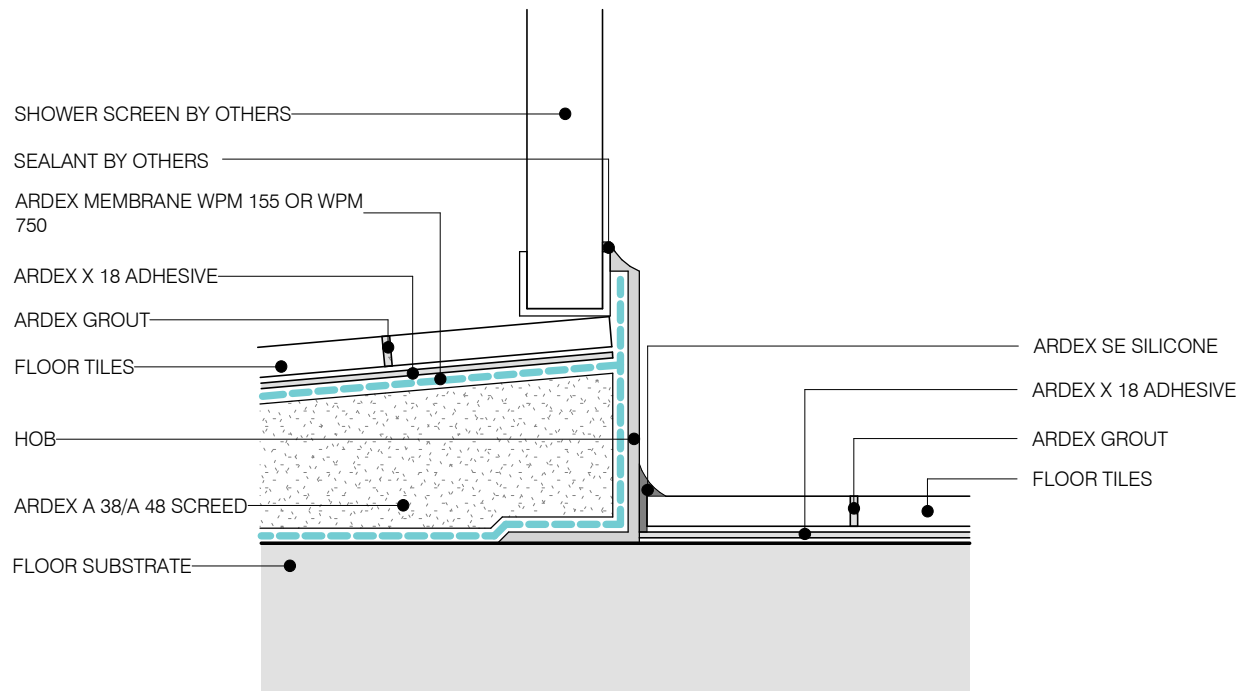
DWG NO. **AWW-18**

DATE 06.05.2019

SCALE 1 : 2 @ A4



Disclaimer: Ardex makes every reasonable effort to ensure that the technical details, recommendations and other information contained in this drawing are accurate and represent our knowledge and experience at the time of design and publication. Ardex reserves the right to change the information without prior notice. Ardex provides the information in good faith with no representations or warranties (whether implied or otherwise), and will not be liable for any losses or damages, whether direct, indirect or consequential whatsoever, whether in contract, negligence or any other action, arising out of or in connection with the use, or inability to use, the information. It is your responsibility to ensure that our products are used only for the purposes for which they are intended and are used in accordance with any applicable specifications, guidelines, standards, codes of practice, regulations and laws. The supply of our products and services are also subject to certain terms, warranties and exclusions which are available on request.



WET AREA WATERPROOFING

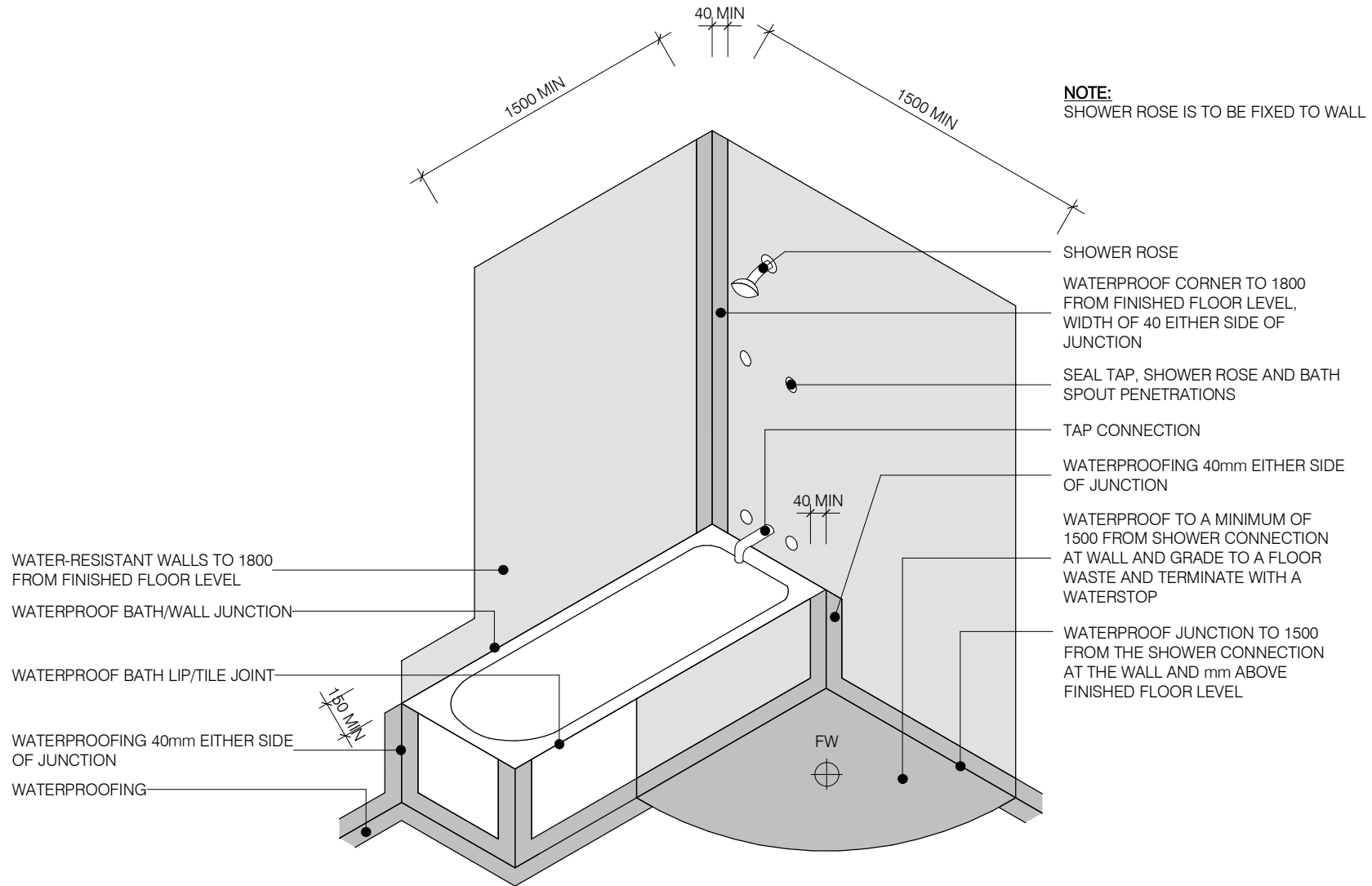
ENCLOSED SHOWER ON FLAT SUBSTRATE
SHEET TITLE

DWG NO. **AWW-19**

DATE 06.05.2019
SCALE 1 : 2 @ A4



Disclaimer: ArDEX makes every reasonable effort to ensure that the technical details, recommendations and other information contained in this drawing are accurate and represent our knowledge and experience at the time of design and publication. ArDEX reserves the right to change the information without prior notice. ArDEX provides the information in good faith with no representations or warranties (whether implied or otherwise), and will not be liable for any losses or damages, whether direct, indirect or consequential whatsoever, whether in contract, negligence or any other action, arising out of or in connection with the use, or inability to use, the information. It is your responsibility to ensure that our products are used only for the purposes for which they are intended and are used in accordance with any applicable specifications, guidelines, standards, codes of practice, regulations and laws. The supply of our products and services are also subject to certain terms, warranties and exclusions which are available on request.



WET AREA WATERPROOFING

NO SHOWER PANEL

SHEET TITLE

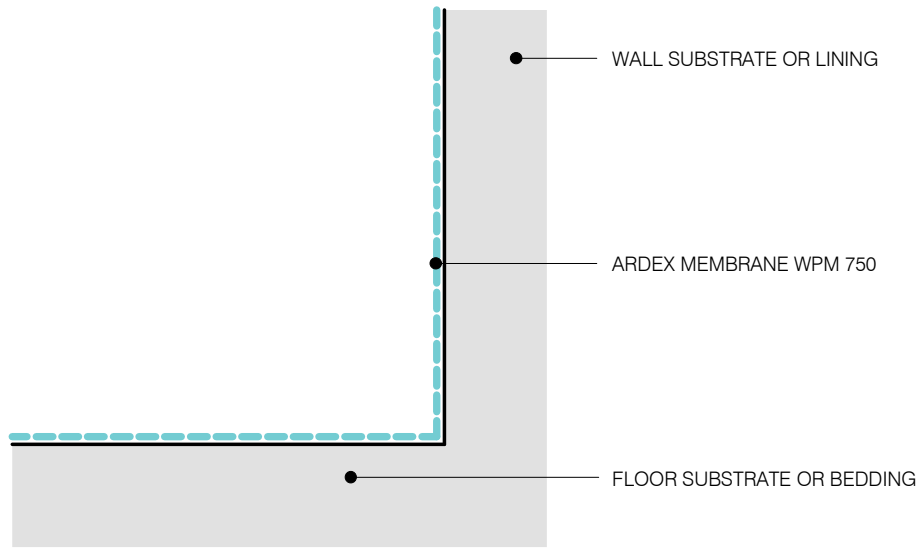
DWG NO. **AWW-20**

DATE 06.05.2019

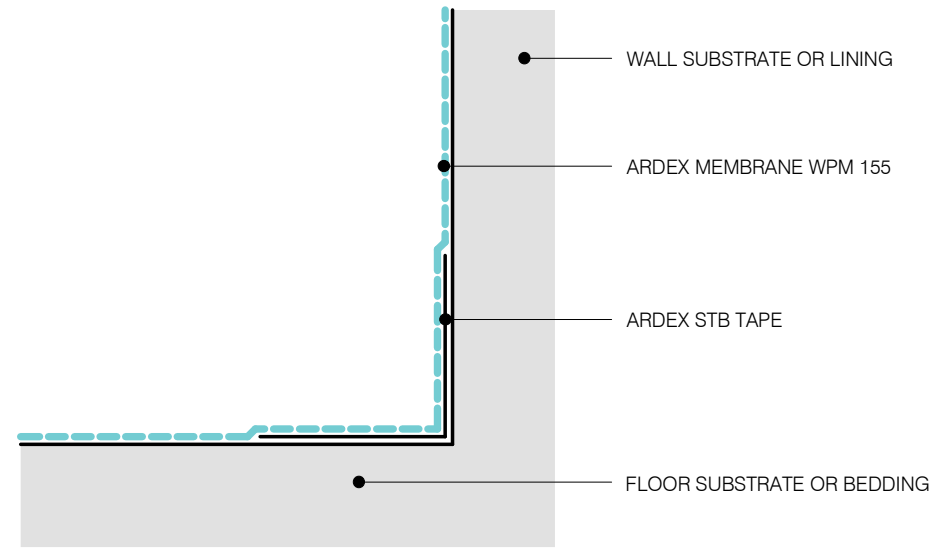
SCALE 1 : 2 @ A4



Disclaimer: Ardex makes every reasonable effort to ensure that the technical details, recommendations and other information contained in this drawing are accurate and represent our knowledge and experience at the time of design and publication. Ardex reserves the right to change the information without prior notice. Ardex provides the information in good faith with no representations or warranties (whether implied or otherwise), and will not be liable for any losses or damages, whether direct, indirect or consequential whatsoever, whether in contract, negligence or any other action, arising out of or in connection with the use, or inability to use, the information. It is your responsibility to ensure that our products are used only for the purposes for which they are intended and are used in accordance with any applicable specifications, guidelines, standards, codes of practice, regulations and laws. The supply of our products and services are also subject to certain terms, warranties and exclusions which are available on request.



DETAIL 1



DETAIL 2

WET AREA WATERPROOFING

WALL/FLOOR DETAIL

SHEET TITLE

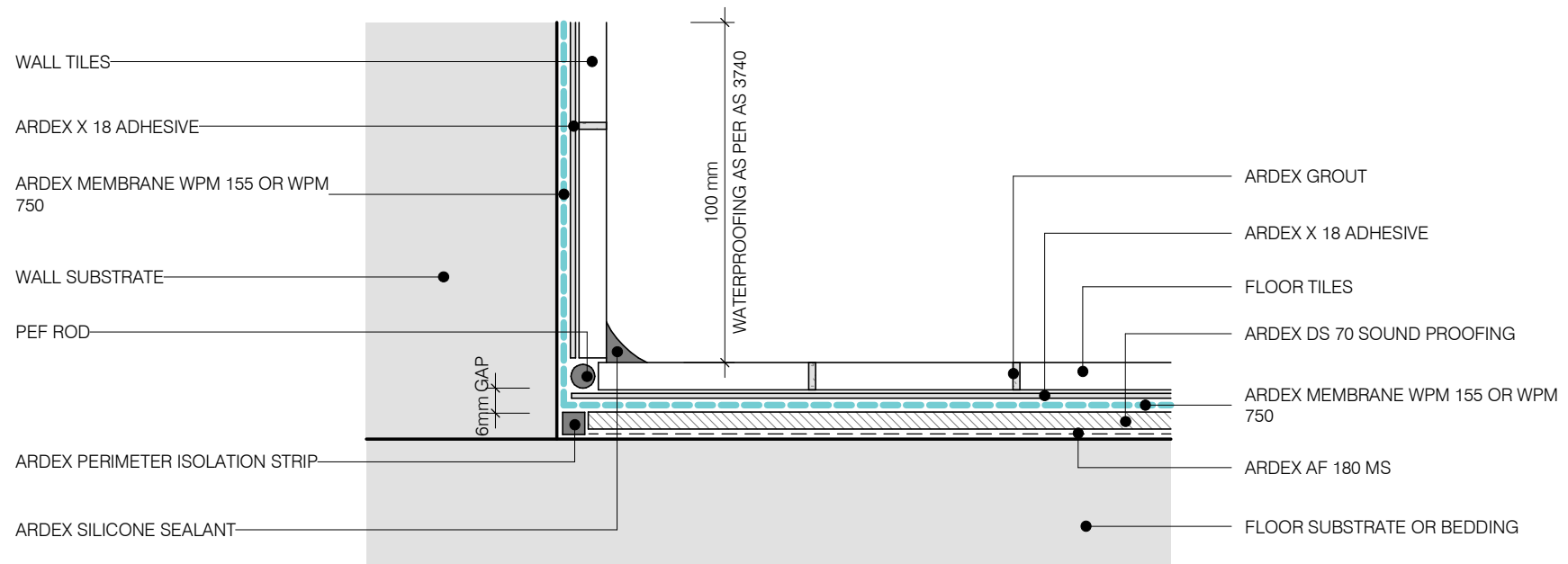
DWG NO. **AWW-21**

DATE 06.05.2019

SCALE 1 : 2 @ A4



Disclaimer: Ardex makes every reasonable effort to ensure that the technical details, recommendations and other information contained in this drawing are accurate and represent our knowledge and experience at the time of design and publication. Ardex reserves the right to change the information without prior notice. Ardex provides the information in good faith with no representations or warranties (whether implied or otherwise), and will not be liable for any losses or damages, whether direct, indirect or consequential whatsoever, whether in contract, negligence or any other action, arising out of or in connection with the use, or inability to use, the information. It is your responsibility to ensure that our products are used only for the purposes for which they are intended and are used in accordance with any applicable specifications, guidelines, standards, codes of practice, regulations and laws. The supply of our products and services are also subject to certain terms, warranties and exclusions which are available on request.



WET AREA WATERPROOFING

TILED FLOOR SOUNDPROOFING WITH WATERPROOFING

SHEET TITLE

DWG NO. **AWW-22**

DATE 06.05.2019

SCALE 1 : 2 @ A4



Disclaimer: Ardex makes every reasonable effort to ensure that the technical details, recommendations and other information contained in this drawing are accurate and represent our knowledge and experience at the time of design and publication. Ardex reserves the right to change the information without prior notice. Ardex provides the information in good faith with no representations or warranties (whether implied or otherwise), and will not be liable for any losses or damages, whether direct, indirect or consequential whatsoever, whether in contract, negligence or any other action, arising out of or in connection with the use, or inability to use, the information. It is your responsibility to ensure that our products are used only for the purposes for which they are intended and are used in accordance with any applicable specifications, guidelines, standards, codes of practice, regulations and laws. The supply of our products and services are also subject to certain terms, warranties and exclusions which are available on request.